

We have pleasure in presenting the provisional Spare Parts Catalogue for 'RE 145 Vehicle. This catalogue has been specially designed to assist you in selecting the correct parts to maintain your vehicle in best running condition..

The Bajaj spares are subjected to the stringent quality control standards to ensure longer life of the vehicle. It is therefore necessary that only the Genuine Bajaj Spares are used.

In a continual effort to improve performance and efficiency of the vehicle, Specifications, Diagrams, Illustrations and Part Numbers can change without notice. Consequently, the description in this Spare Parts Catalogue cannot therefore be final and binding on us.

The modifications/ alterations which are carried out after the issue of this catalogue, will be conveyed to you through our service circulars. You are requested to make necessary corrections in the parts catalogues as per the circulars so as to keep your catalogues up to date. This will ensure the appropriate and speedy delivery of the spare parts as the order placed will bear the latest part numbers.

In case, if you need any technical assistance contact the concerned Regional Office or write to us on the following address :

Export Service Department
Bajaj Auto Ltd.
Akurdi, Pune 411 035 India
Phone : 020-27406278
Fax : 020-27407385
E-mail : service@bajajauto.co.in

All information contained in this manual is based on the latest product information at the time of publication. Bajaj Auto Limited accepts no liability for any inaccuracies or omissions in this publication, although every possible care has been taken to make it as complete and accurate as possible. All procedures and specifications subject to change without prior notice. The right is reserved to make such changes at any time without prior notice and without incurring an obligation to make such changes to product manufactured previously. Contact your authorized Bajaj Dealer for the latest information on product improvements incorporated after this manual was issued.

DOC. NO.:

REV. 00. Mar. 2012

1. How to Read the Catalogue : In case, if you have the part number and you need the other details, the part index can be used. The part index (at the end of the catalogue) will give you the figure and page number of the part you wish to order.

2. How to Order Spare Parts : The part number and the description of the part required should be invariably mentioned in the order as per the catalogue text.

The latest part number as conveyed through our service circulars should only appear on the order. In case of ordering painted components, colour shade of the components should be mentioned.

The quantity shown against the part number is the quantity per vehicle for that group so that particular quantity should be multiplied by the number of sets required.

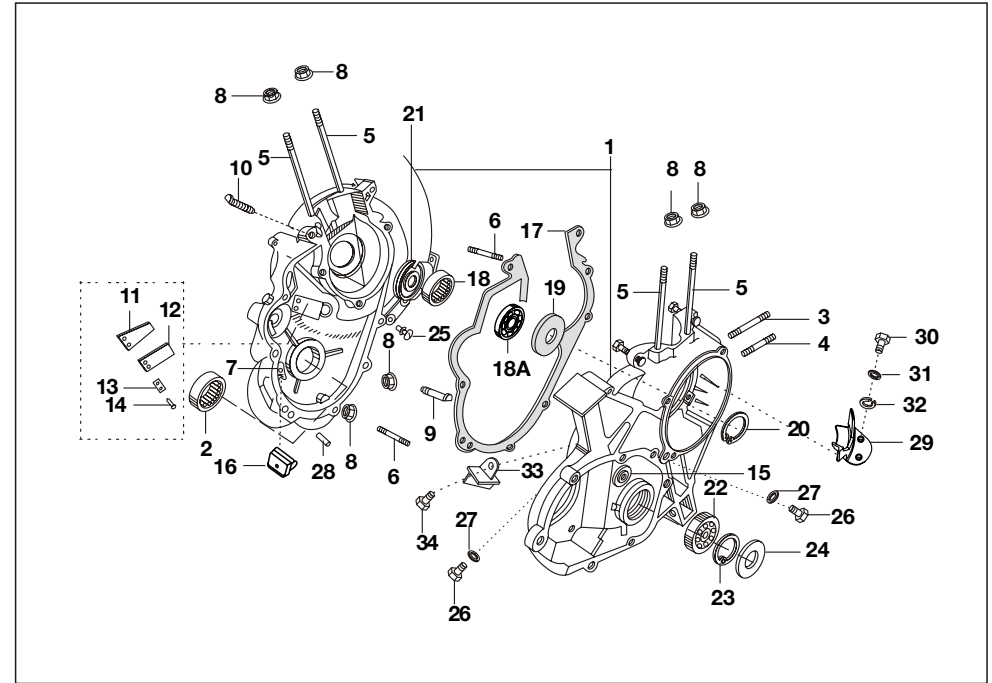
3. Part Number System: We have used 8 digit system for part numbers. The model or hardware item is indicated by first two digits or alphanumeric, the next two or four digits indicate main group and the last four or two digits indicate serial number in main group or serial number or subgroup of fastener respectively. Thus the part numbers will be indicated by 2-2-4 or 2-4-2 digit system. Understanding this system will enable you to identify the spare parts easily.

4. Abbreviations : The following abbreviations are used in this catalogue.

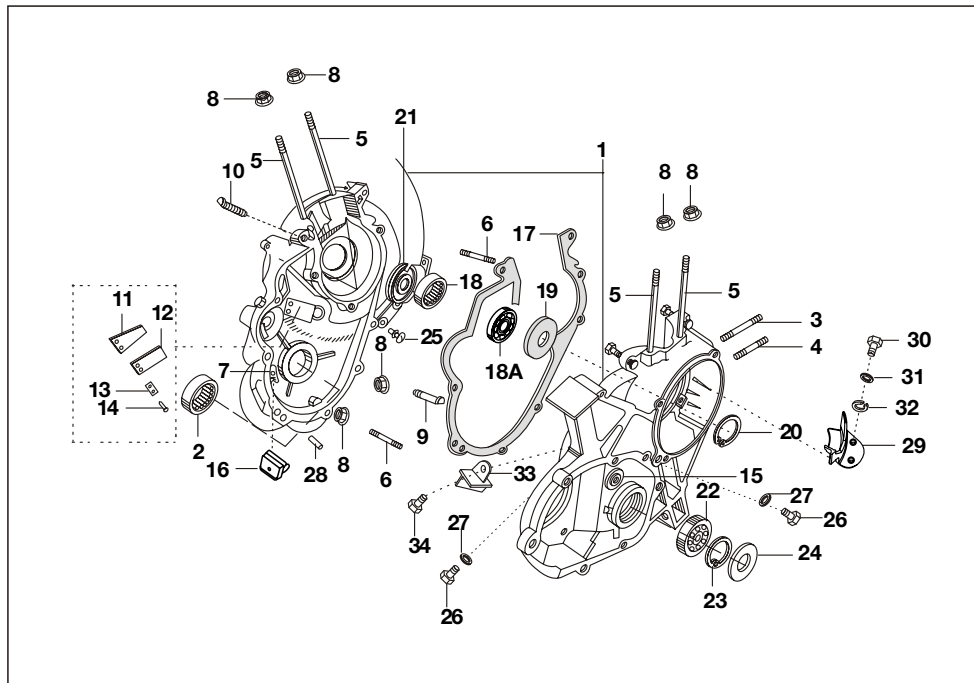
assly.	Assembly	V	Volts
N.I.	Not illustrated	W	Watts
C'case	Crankcase	accl.	Accelerator
Cyl	Cylinder	Comp.	Complete
o/s.	Over size	Fr	Front
Std.	Standard	L	Length
A/t.	Alternate	Rr	Rear
R.H.	Right hand	Hex.	Hexagonal
L.H.	Left hand	AR	As required

No.	Description	Page No.
1	Engine & Crankcase Assly.	1, 2
2	Cylinder / Cylinder Head / Piston	3
3	Crank Shaft	4
4	Clutch Assly (for Kick Start)	5
5	Clutch Cover	6
6	Main Shaft	7
7	Cluster Gear / Starter Gear	8
8	Gear Shifter / Connecting Link Assly	9
9	Sector Gear / Starting Mechanism	10, 11
10	Magneto Assly.	12
11	C.D.I. / H.T. Coil / Spark Plug	13
12	Cowling / Fan / Fan Cover	14
13	Silencer	15
14	Carburetor Ucal	16
15	Air Cleaner Assly. (Foam Type)	17
16	Reed Valve	18
17	Deferential Unit	19
18	Deferential Cover	20
19	Fare Meter Drive Unit	21
20	Petrol Tank & Petrol Cock Assly.	22, 23
21	Engine Mounting Unit	24
22	Tool Box	25
23	Speedometer	26
24	Chassis / Steering Cover	27, 28
25	Propeller Shaft / Flanges	29
26	Rear Shock Absorber / Rear Axle	30
27	Wheel Assly	31
28	Hand Brake Complete	32
29	Trailing Arm Assly.	33
30	Steering Column Assly	34
31	FR Mud Guard / Head Lamp HSG	35

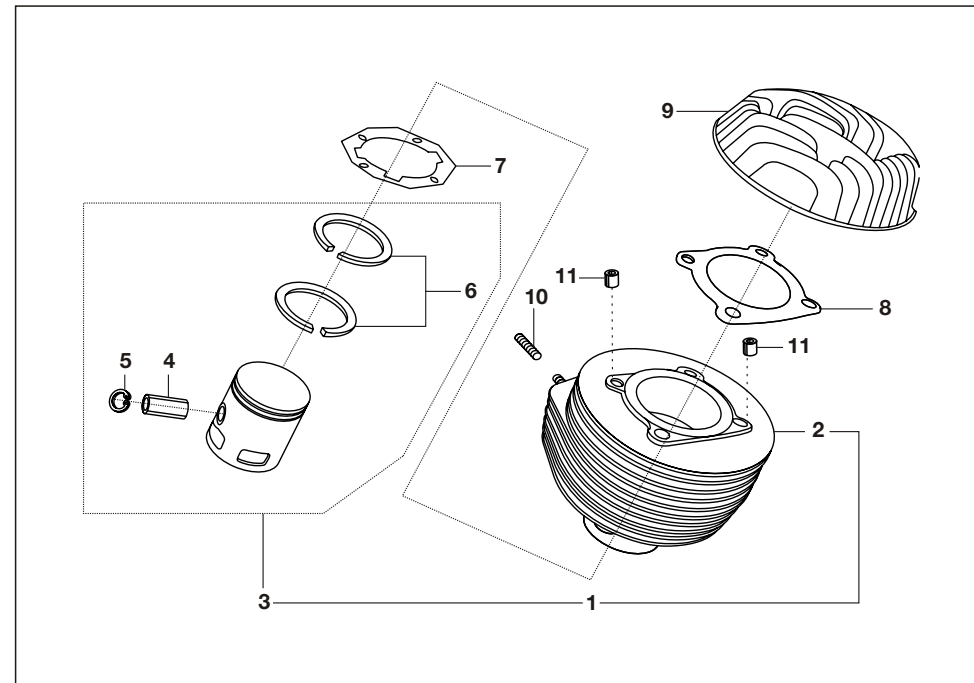
No.	Description	Page No.
32	Front Shock Absorber	36
33	Front Hub	37, 38
34	Auto Adjuster Brake System	39, 40
35	Wheel Cylinder Front	41
36	Handle Bar Assly	42
37	Handle Bar Sleeves	43
38	Brake Pedal	44
39	Tandem Master Cylinder	45, 46
40	Brake Pipe Single Piece	47
41	Wheel Cylinder (Rear)	48
42	Control Cables	49
43	Passenger Body	50, 51
44	Wind Shield & Wiper Motor	52, 53
45	Hood Frame Assly. / Packing	54
46	Seat Assly	55
47	Rear Mud Guard & Bumper	56
48	Wiring Harness	57
49	Head Light	58
50	Front Indicator Assly.	59
51	Tail Lamp Assly	60
52	Switch & Horn	61
53	Battery & Relay	62
54	Tool Kit & Mirror	63



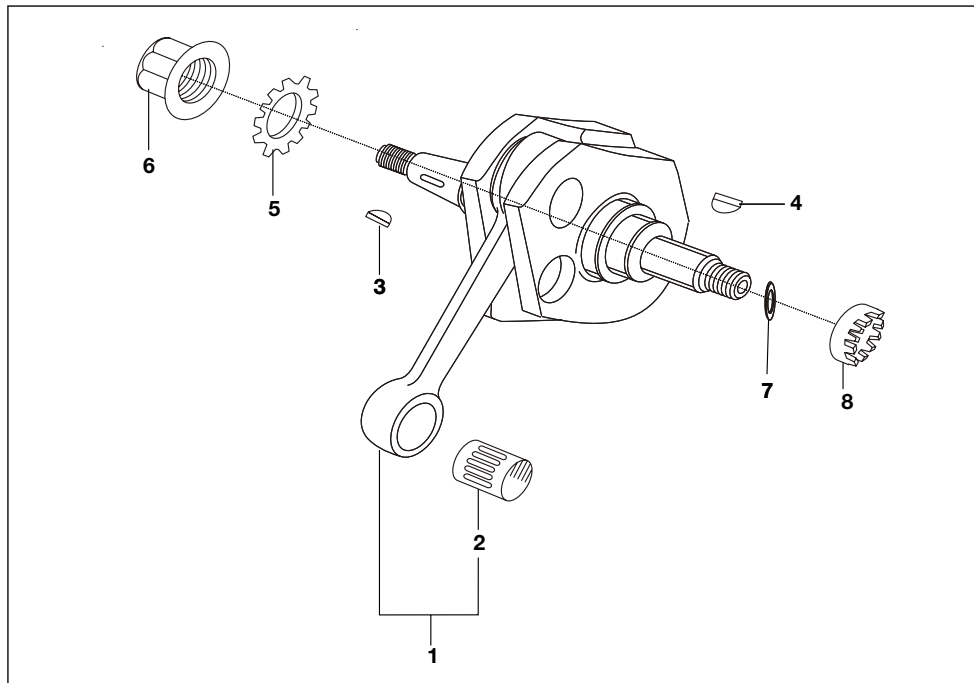
No.	Part No.	Description	Qty/Veh.	Remarks
1	24 1016 33	Crankcase clutch side	1	
	24 1017 15	Crankcase magneto side	1	
2	03 1003 35	Needle roller bearing	1	
3	39 0442 05	Stud for manifold (Long)	1	
4	59 0500 09	Stud for manifold (Short)	3	
5	AP 1011 46	Stud for cylinder head	4	
6	39 0132 05	Stud	6	
7	01 1003 14	Plug	1	
8	39 2369 15	Flange nut	14	
9	39 0089 04	Bolt for joining c'case halves	4	
10	39 0444 04	Bolt for joining crank case	1	
11	01 1003 15	Spring plate - Lower	1	
12	01 1003 16	Spring plate - Upper	1	
13	01 1003 17	Spacer pad	1	
14	39 0852 09	Rivet	2	
15	24 1003 05	Bush	1	
16	CD1011 02	Kick buffer	2	
17	24 1015 52	Gasket for Crankcase	1	



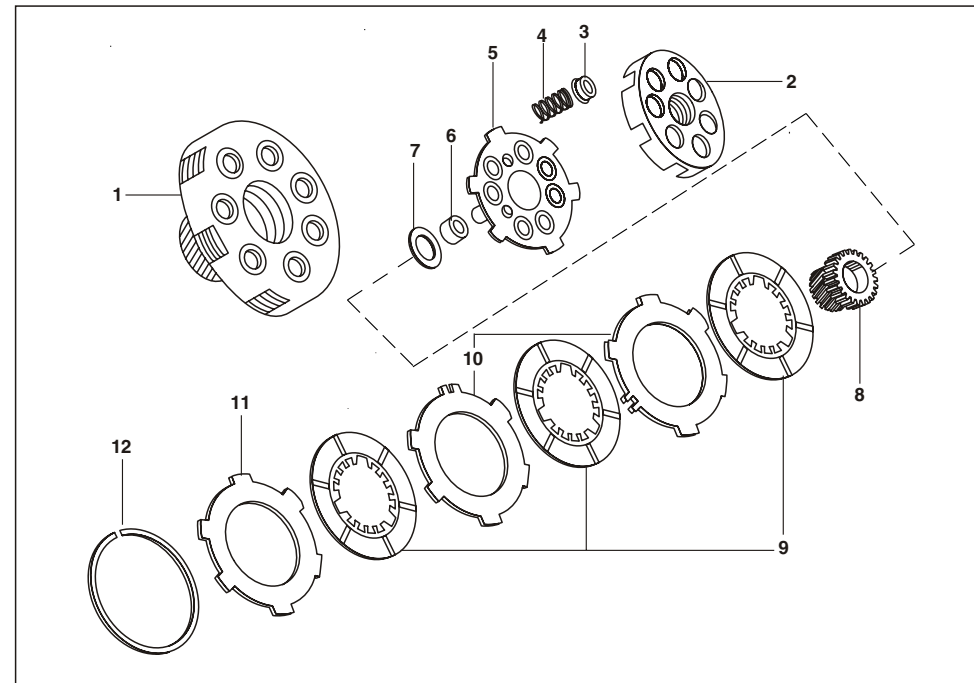
No.	Part No.	Description	Qty/Veh.	Remarks
18	05 1010 18	Needle roller bearing	1	
18A	03 1003 38	Ball bearing	1	
19	39 1355 19	Oil seal clutch side	1	
20	01 1003 41	Circlip for oil seal locking	1	
21	39 1356 19	Oil seal magneto side	1	
22	24 1003 08	Ball bearing for main shaft	1	
23	39 0342 17	Circlip	1	
24	24 1003 14	Oil seal	1	
25	24 1003 11	Rubber plug	2	
26	39 2671 04	Flange bolt	2	
27	39 1585 11	Plain washer	2	
28	39 1000 06	Dowel pin	2	
29	24 1016 87	Deflector for oil	1	
30	39 1577 04	Hex screw M6	2	
31	39 0198 11	Plain Washer	2	
32	39 1826 12	Spring Washer	2	
33	24 1016 97	Bracket oil feed	1	
34	24 1017 00	Hex head screw	1	



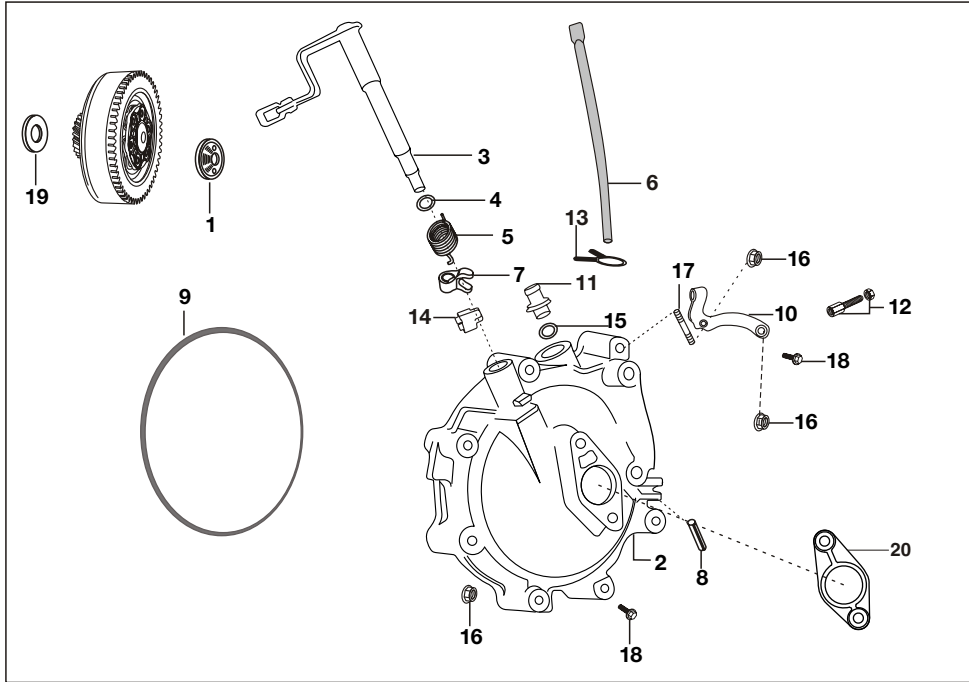
No.	Part No.	Description	Qty/Veh.	Remarks
1	24 1016 29	Cylinder block & Piston assly.	1	
2	24 1016 30	Cylinder block	1	
3	CD 1010 24	Piston assembly	1	
4	06 1011 96	Gudgeon pin	1	
5	39 0340 17	Circlip	2	
6	22 1012 11	Piston Ring	2	
7	AP 1010 05	Gasket for cylinder block	1	
8	24 1017 23	Gasket for cylinder head	1	
9	24 1016 32	Cylinder Head	1	
10	23 1707 04	Stud	2	
11	39 1000 06	Dowel	2	



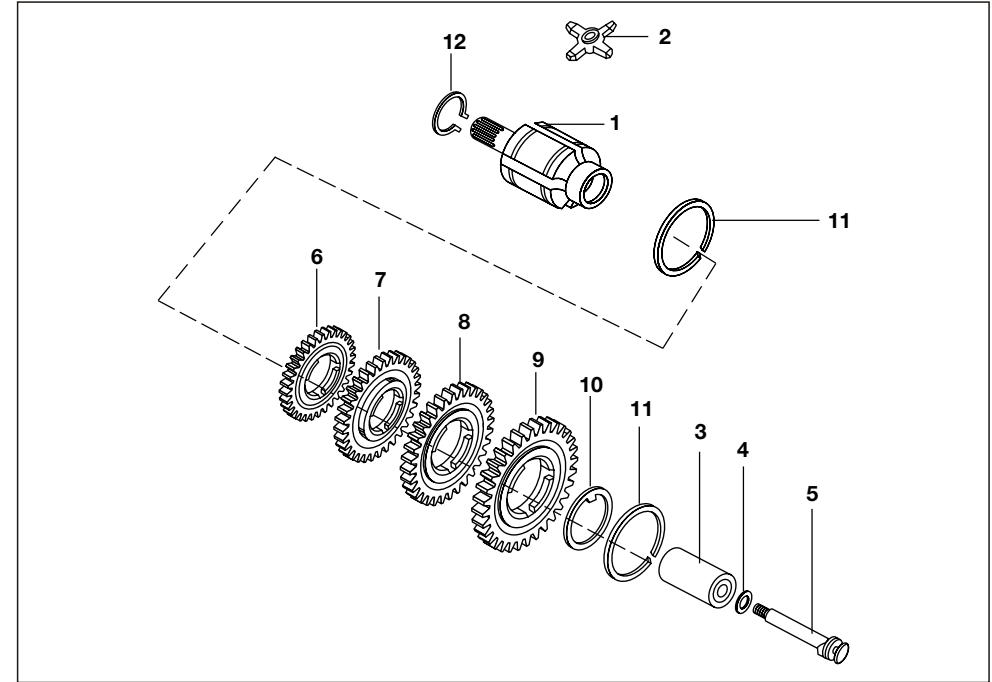
No.	Part No.	Description	Qty/Veh.	Remarks
1	24 1012 06	Crank shaft assembly	1	
2	AP 1012 43	Small end roller bearing	1	
	AP 1012 44	Small end roller bearing	1	
	AP 1012 45	Small end roller bearing	1	
3	AA 1013 45	Woodruff key for magneto	1	
4	01 1006 11	Woodruff key for clutch	1	
5	01 1006 12	Fan disk washer	1	
6	01 1006 13	Nut with collar	1	
7	01 1006 14	Washer plain	1	
8	01 1006 15	Nut Clutch	1	



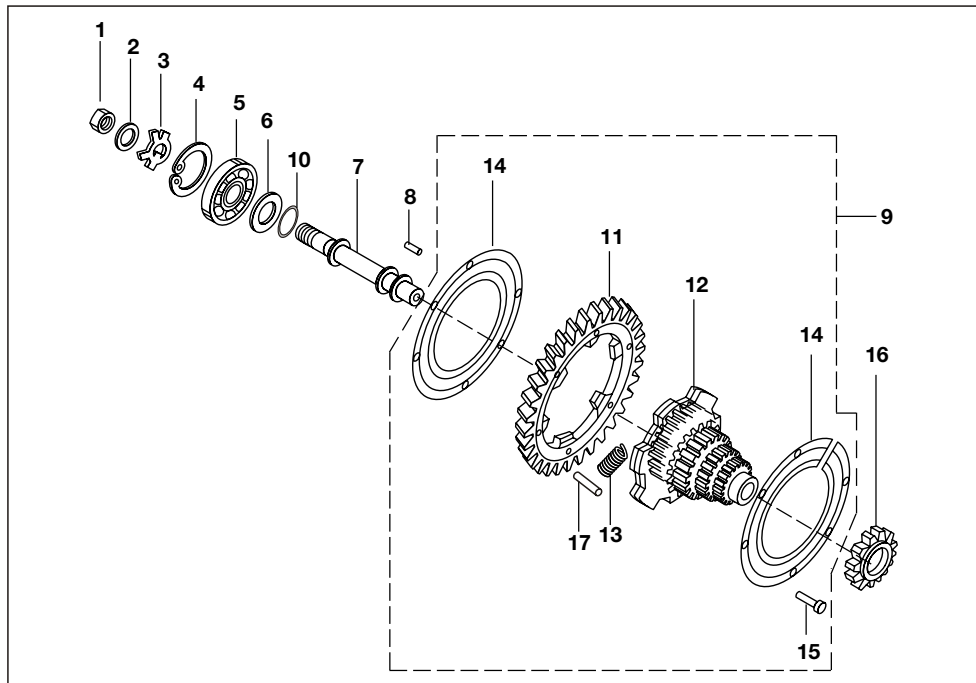
No.	Part No.	Description	Qty/Veh.	Remarks
1	AE 1010 14	Clutch assy. Comp	1	
2	35 1011 70	Clutch box	1	
3	22 1301 47	Cup for spring	7	
4	35 1012 08	Clutch spring	7	
5	AE 1010 71	Clutch bush assembly	1	
6	01 1008 23	Bush (Sintered)	1	
7	01 1008 18	Washer	1	
8	AE 1010 06	Engine gear	1	
9	AE 1010 66	Driving plate assembly	3	
10	AE 1010 15	Driven plate	2	
11	AE 1010 68	Outer Clutch plate	1	
12	35 1011 76	Lock ring	1	



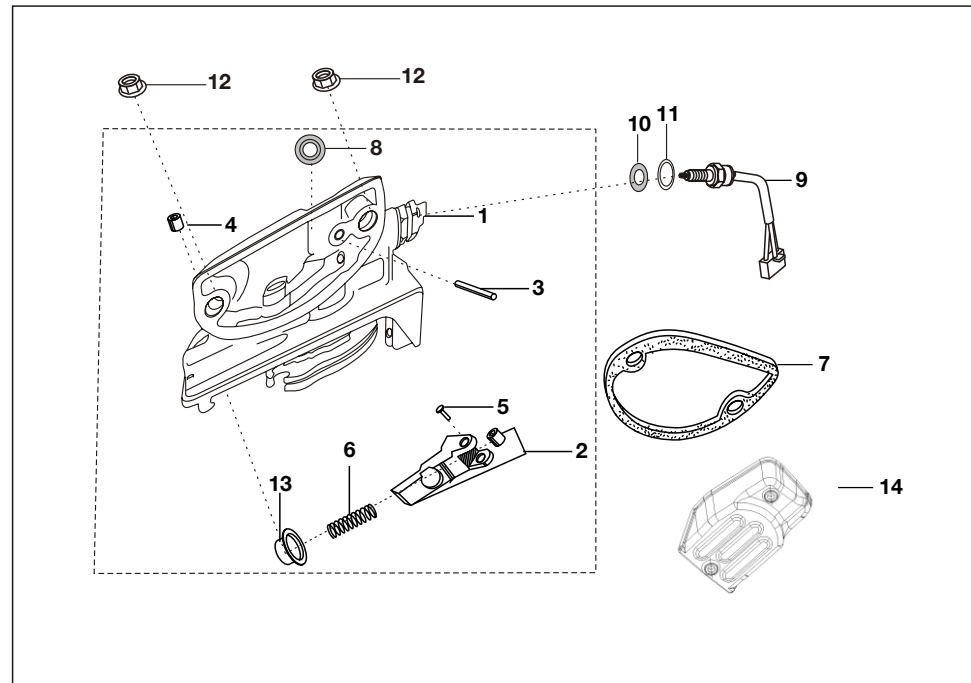
No.	Part No.	Description	Qty/Veh.	Remarks
1	24 1008 08	Thrust Plate	1	
2	24 1016 74	Clutch cover	1	
3	24 1016 76	Clutch lever external assly.	1	
4	01 1009 05	'O' ring	1	
5	24 1010 96	Clutch lever return spring	1	
6	AE 1010 70	Tube assly. Breather	1	
7	24 1009 07	Internal lever	1	
8	39 0447 06	Spring type straight pin	1	
9	01 1009 11	'O' ring Clutch Cover	1	
10	24 1015 97	Bracket for adjuster	1	
11	24 1015 98	Breather pipe	1	
12	24 1214 35	Adjuster with nut	1	
13	28 1011 74	Clip	1	
14	24 1009 08	Plunger	1	
15	39 1738 21	'O' ring	1	
16	39 2124 15	Nut flange M6x1	2	
17	39 0554 05	Stud M6x1	2	
18	39 2436 04	Bolt M6X1- 40	7	
19	06 1012 13	Spacer	1	
20	24 1017 06	Cover Plate	1	



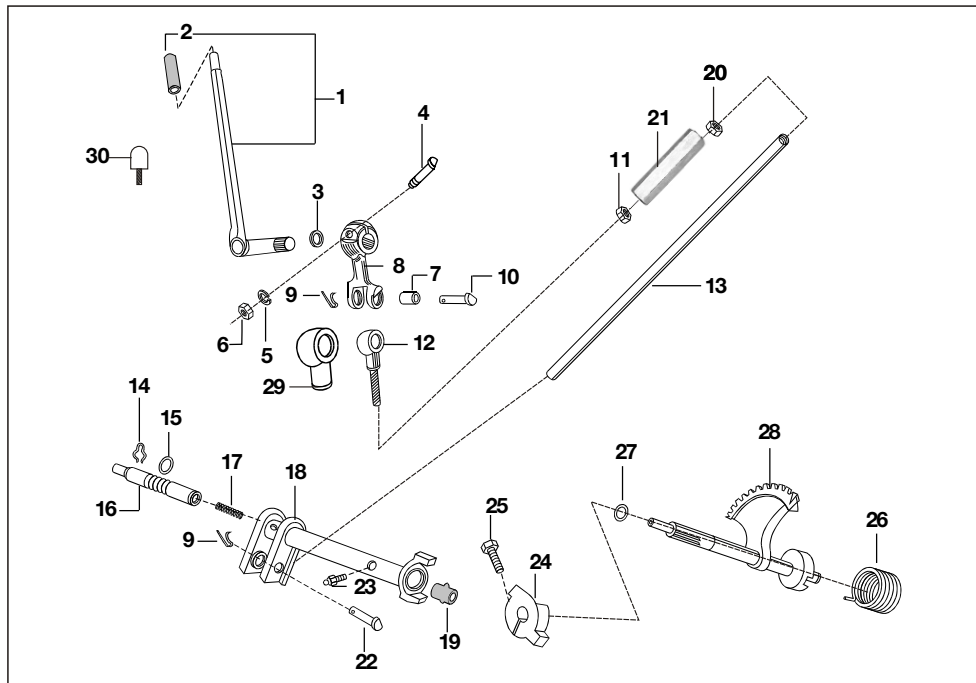
No.	Part No.	Description	Qty/Veh.	Remarks
1	24 1011 00	Main shaft	1	
2	35 1010 59	Cross (flat type)	1	
3	35 1010 58	Guide bush	1	
4	39 0213 11	Plain washer	1	
5	06 1007 02	Stem	1	
6	24 1010 49	4th Speed gear	1	
7	24 1007 04	3rd Speed gear	1	
8	24 1007 05	2nd Speed gear	1	
9	19 1010 14	1st Speed gear	1	
10	19 1010 16	Shoulder ring No. 1	1	
	19 1010 17	Shoulder ring No. 2	1	
	19 1010 18	Shoulder ring No. 3	1	
	19 1010 19	Shoulder ring No. 4	1	
11	21 1007 11	Circlip	2	
12	21 1003 24	Circlip	1	



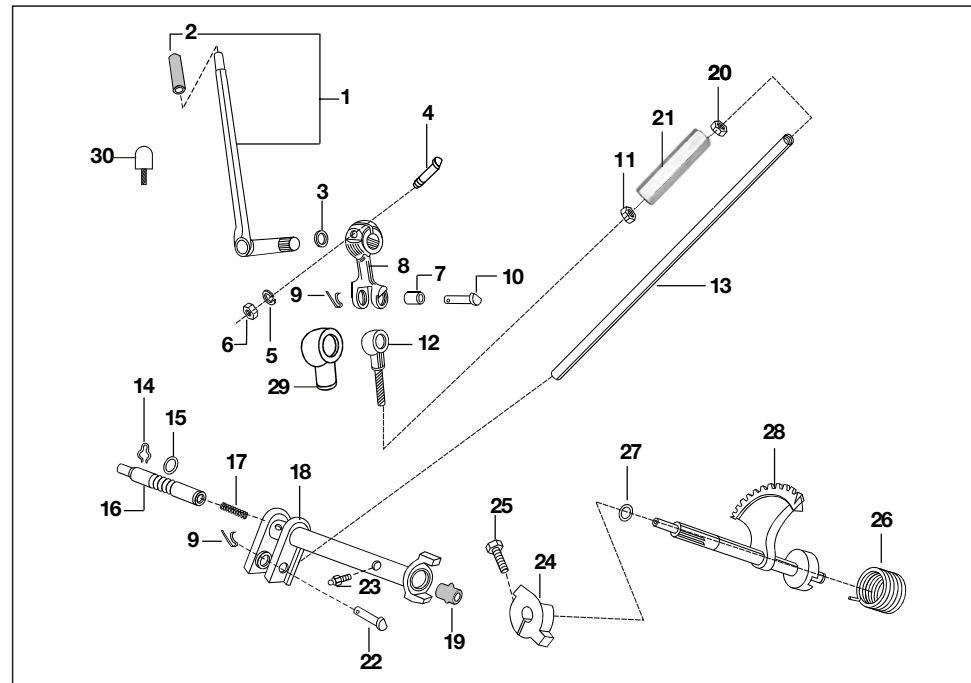
No.	Part No.	Description	Qty/Veh.	Remarks
1	LC A000 03	Hexagon nut	1	
2	24 1016 36	Plain washer	1	Upto 24-10-2010
2A	24 1017 14	Plain Washer	1	From 25-10-2010
3	24 1016 28	Washer Lock	1	Upto 24-10-2010
3A	24 1017 12	Washer Lock	1	From 25-10-2010
4	03 1701 27	Circlip	1	
5	06 1010 09	Ball bearing	1	
6	24 1010 05	Spacer for M.G.pin	1	
7	24 1016 27	Multiple gear pin with nut	1	Upto 24-10-2010
7A	24 1017 13	Multiple gear pin (Flat Portion Threaded)	1	From 25-10-2010
8	01 1010 08	Roller	21	
9	AP 1011 57	Multiple gear assembly comp.	1	
10	AP 1012 07	'O' ring	1	
11	AP 1011 59	Corona gear	1	
12	AP 1011 58	Multiple gear	1	
13	AP 1011 62	Spring	5	
14	AP 1011 60	Cluster gear plate	2	
15	39 0161 09	Rivet	6	
16	06 1010 07	Starter gear	1	
17	AP 1011 64	Pin spring straight	10	



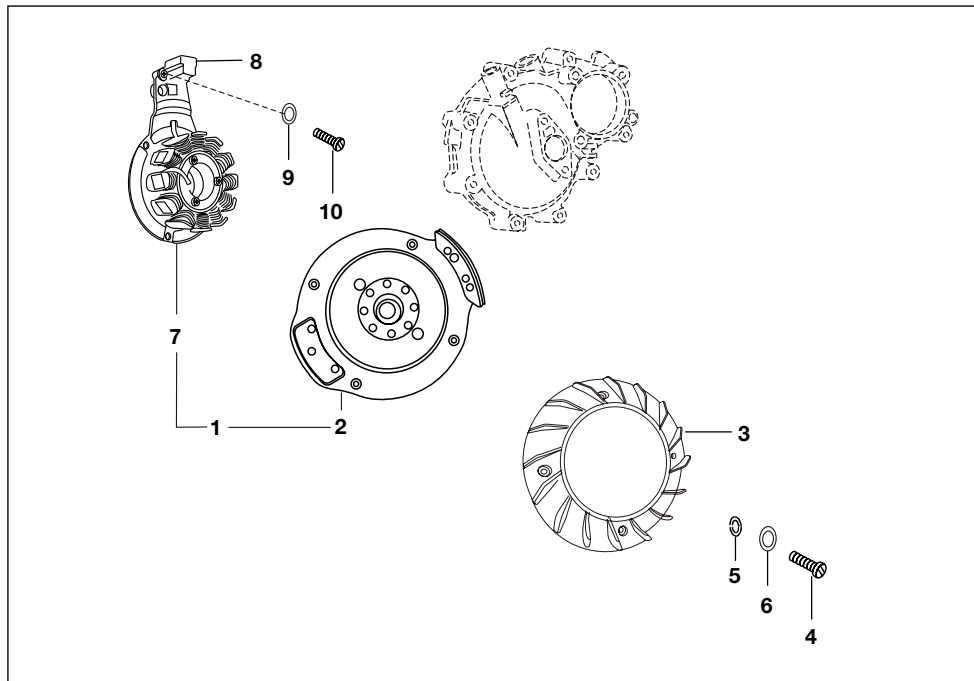
No.	Part No.	Description	Qty/Veh.	Remarks
1	AP 1012 49	Gear shifter complete	1	
2	24 1011 11	Bracket assembly with roller	1	
3	06 1011 10	Pin	1	
4	39 0992 06	Dowel	1	
5	06 1011 11	Screw for bracket	1	
6	06 1011 12	Spring	1	
7	CD 1010 80	Gasket for gear shifter Housing	1	
8	39 1041 19	Oil seal	1	
9	AP 1110 23	Neutral switch	1	
10	20 1010 20	Gasket	1	
11	39 0804 11	Plain washer	1	
12	39 2369 15	Flange nut	2	
13	AP 1011 98	Cup spring detent	1	
14	AP 1010 91	Cover gear shifter	1	



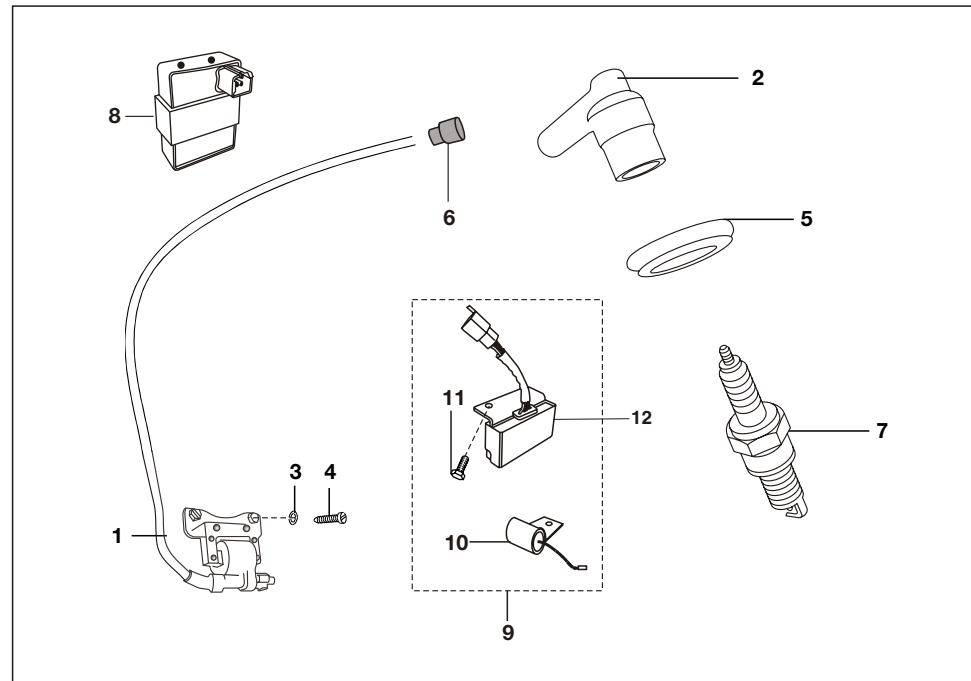
No.	Part No.	Description	Qty/Veh.	Remarks
1	24 1011 77	Starting handle with grip	1	
2	22 1011 15	Starting handle grip	1	
3	24 1014 14	Washer	2	
4	39 1426 04	'D' bolt	1	
5	39 0266 12	Spring washer	1	
6	39 0694 15	Hex Lock nut - M8 x 1.25	1	
7	24 1015 72	Nylon Bush	1	Upto 13-10-2010
7A	24 1017 20	Bush Collar Type	1	From 14-10-2010 N.I.
8	AA 1013 29	Lever Driver side	1	
9	39 0146 08	Spring Clip	2	
10	24 1014 22	Pin	1	
11	39 0296 15	Hexagon nut R.H.Thread	1	
12	24 1014 17	Eye bolt R.H.Thread	1	
13	24 1016 15	Connecting tube	1	
14	21 1014 29	Spring clip	1	
15	03 1801 16	'O' ring	1	



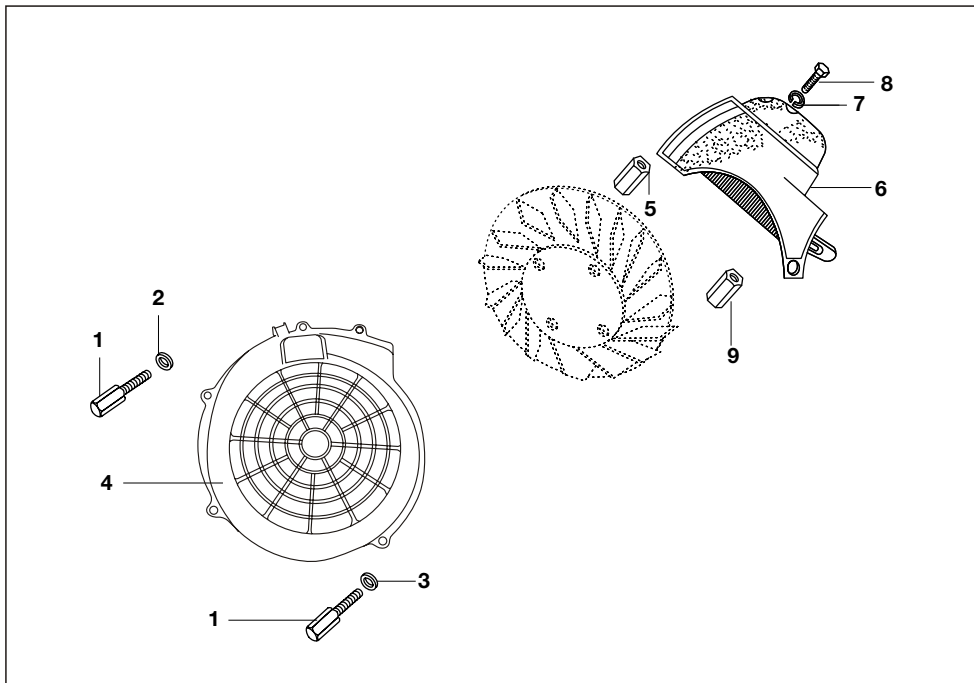
No.	Part No.	Description	Qty/Veh.	Remarks
16	24 1014 09	Pin for lever support	1	
17	21 1014 27	Spring	1	
18	24 1010 87	Starting tube assembly	1	
19	22 1014 23	Rubber plug	1	
20	24 1014 19	Hexagon nut L.H. Thread	1	
21	24 1016 16	Connector	1	
22	24 1014 21	Pin	1	
23	23 1613 05	Grease nipple	1	
24	24 1012 03	Driven dog	1	
25	39 0390 04	Hexagon screw	1	
26	01 1012 05	Return spring	1	
27	01 1012 06	'O' ring	1	
28	24 1012 01	Sector gear assembly	1	
29	24 1613 19	Cap eye bolt conn. tube	1	Upto 13-10-2010
30	24 1613 52	Rubber plug for starting lever	1	



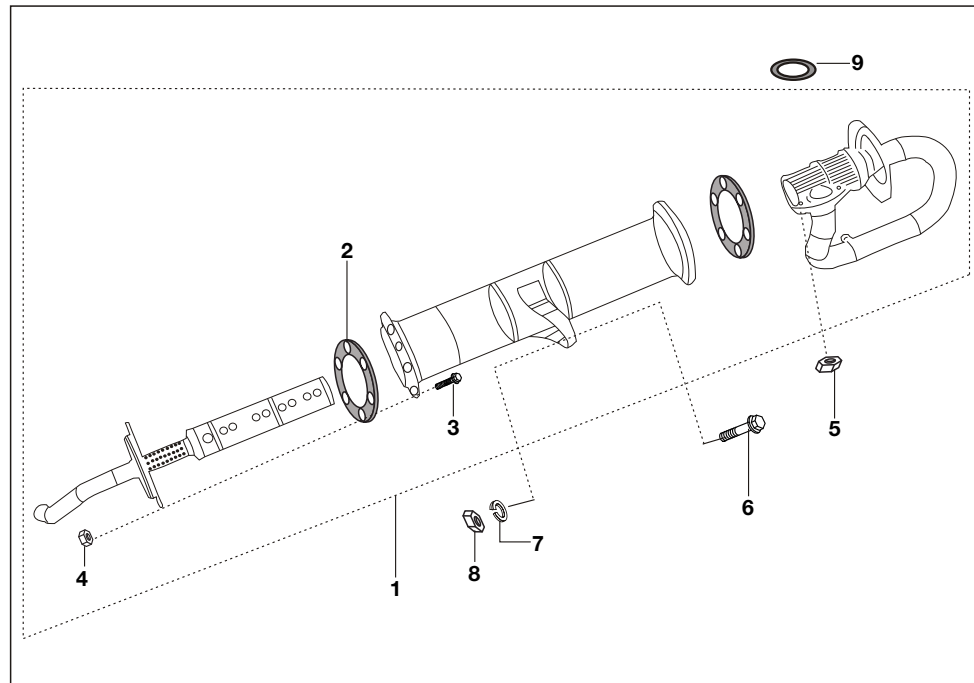
No.	Part No.	Description	Qty/Veh.	Remarks
1	24 1111 95	Magneto assembly (25 degree)	1	
2	24 1111 55	Rotor assembly	1	
3	24 1111 05	Fan(Plastic)	1	
4	39 0886 01	Screw pan cros.	4	
5	39 0262 12	Spring washer	4	
6	39 0197 11	Plain washer	4	
7	24 1111 24	Stator assembly	1	
8	CD 1110 04	Pick up coil assly	1	
9	39 0242 11	Washer	4	
10	LA C000 25	Allen Bolt	4	



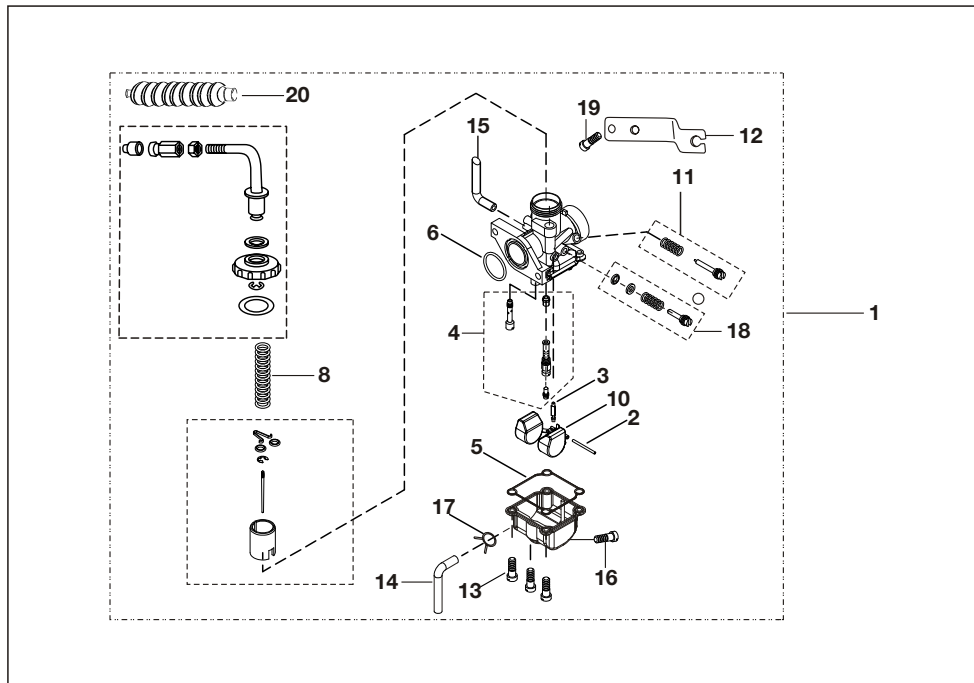
No.	Part No.	Description	Qty/Veh.	Remarks
1	24 1111 21	H.T. Coil (RED)	1	
2	06 1113 50	spark plug cap resistive	1	
3	39 0197 11	Spring Washer	4	
4	39 0012 01	Cheese Head Screw	2	
5	24 1111 09	Insulating cap	1	
6	AA 1110 76	Grommet for Spark plug	1	
7	16 1111 25	Spark plug	1	
8	22 1110 80	CDI with Damper	1	Black Color
9	24 1111 90	CDI with Damper	1	Blue Color
10	24 2012 77	Assly. regulator / capacitor	1	
11	DD 1412 27	Bolt flange	2	
12	24 2012 74	Regulator with coupler	1	



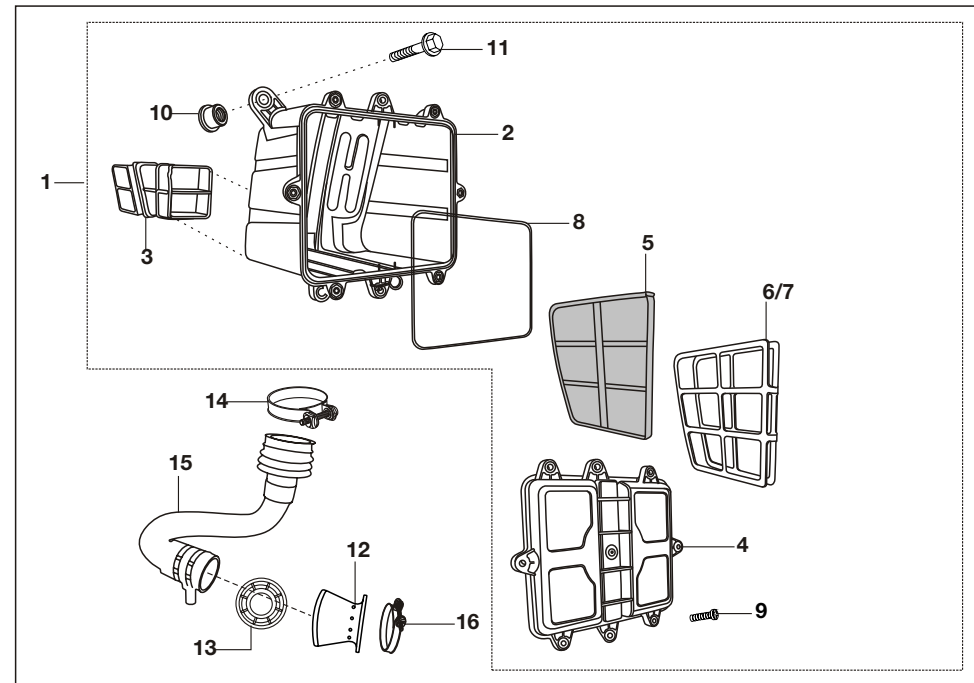
No.	Part No.	Description	Qty/Veh.	Remarks
1	24 1111 07	Special bolt	4	
2	39 0239 11	Plain washer	1	
3	39 0198 11	Plain washer	3	
4	24 1012 05	Fan cover	1	
5	01 1013 06	Special nut	1	
6	24 1011 55	Cowling assly comp.	1	
7	39 1825 12	Spring washer	1	
8	39 0096 04	Bolt	1	
9	24 1016 35	Nut Special	1	



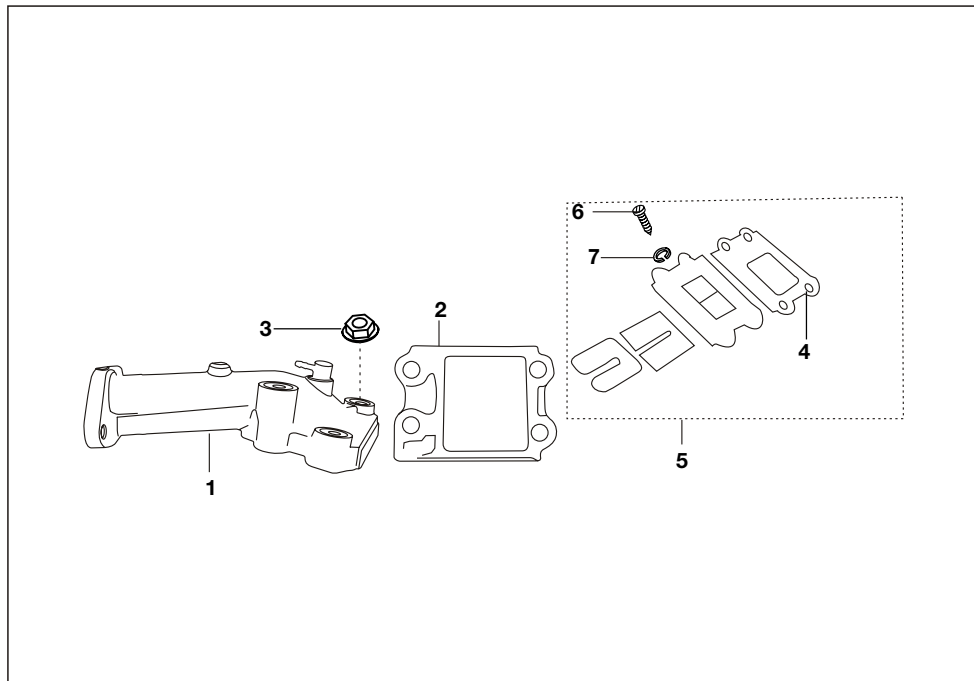
No.	Part No.	Description	Qty/Veh.	Remarks
1	AE 1010 07	Silencer Comp. FOR V-AE (FLANGE TYPE)	1	
2	22 1010 03	Packing asbestos	2	
3	39 0062 04	Flange bolt	12	
4	39 0292 15	Hex nut	12	
5	39 0289 15	Hex nut	2	
6	39 0389 04	Hex bolt	1	
7	39 1826 12	Spring washer	1	
8	39 0312 15	Hex Nut	1	
9	15 1011 22	Gasket silencer	1	



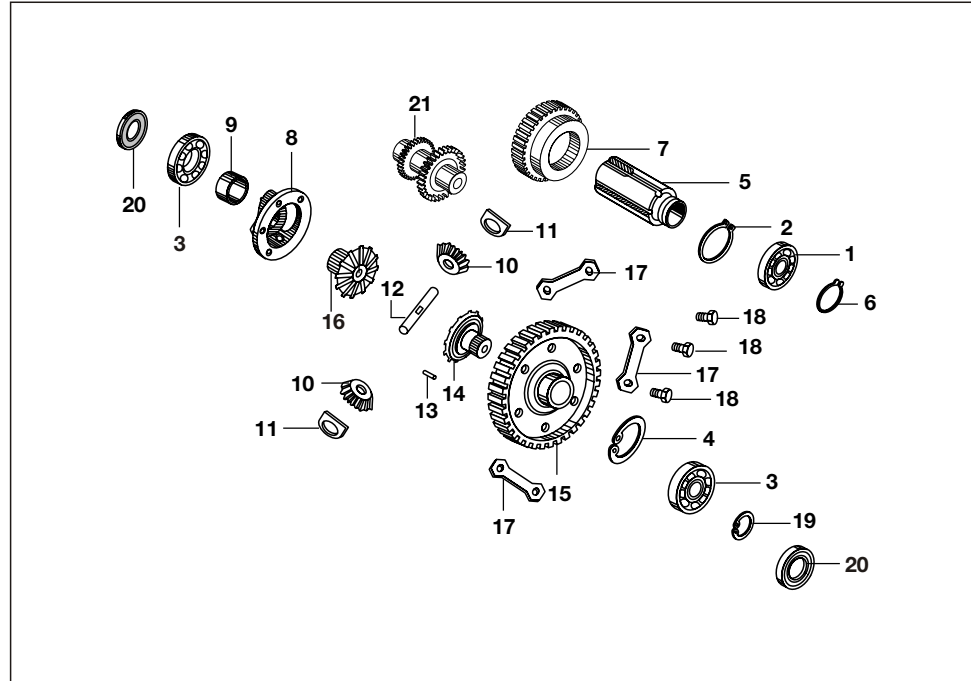
No.	Part No.	Description	Qty/Veh.	Remarks
1	24 1214 57	Carburettor comp. (W/O Oil Pump)	1	
2	24 1210 69	Pin float	1	
3	16 1211 38	Needle valve assly.	1	
4	24 1214 86	Jet Kit	1	
5	24 1213 61	Seal	1	
6	31 1210 80	'O' ring	1	
7	24 1214 87	Piston Valve Assly. Kit	1	
8	DD 1210 47	Spring throttle valve	1	
9	24 1214 88	Mixing Cap Assly. Kit	1	
10	24 1213 65	Float	1	
11	24 1214 49	Idling Adjuster Kit	1	
12	24 1213 74	Bracket Choke Cable	1	
13	CB 1210 46	Screw	3	
14	24 1215 08	Hose Drain	1	
15	DZ 1210 47	Vent Hose	1	
16	21 1210 86	Drain Screw	1	
17	AA 1410 46	Clip hose	1	
18	24 1214 85	Air Screw Kit	1	
19	24 1213 81	Screw	1	
20	AF 1213 28	Accelerator Cable Below	1	



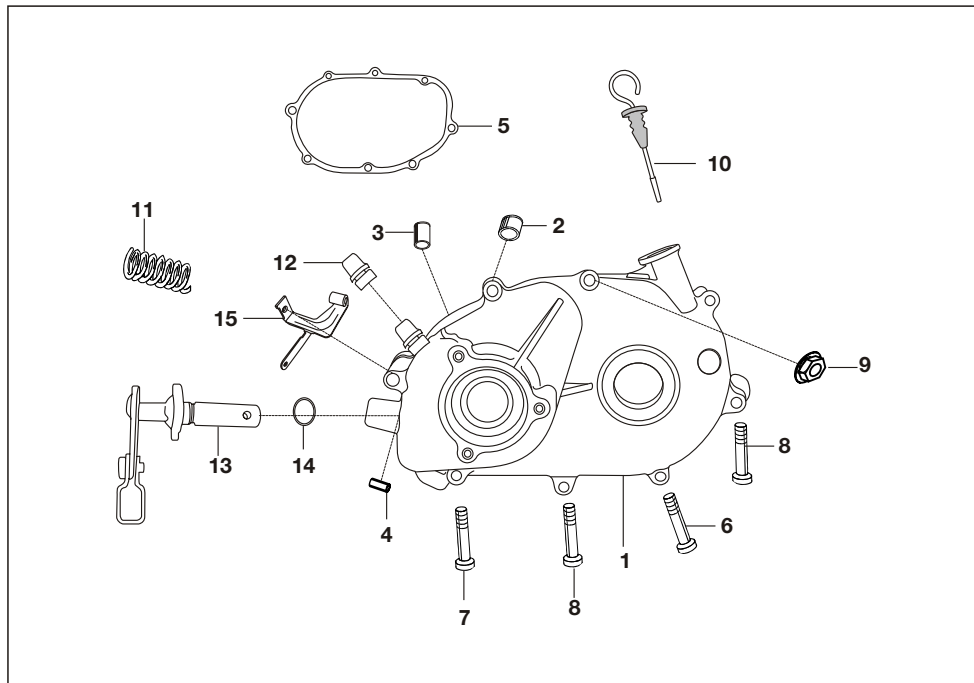
No.	Part No.	Description	Qty/Veh.	Remarks
1	24 1216 61	Assly. Air filter- SAI type	1	
2	AP 1210 09	Case air filter	1	
3	24 1216 45	Duct in air filter	1	
4	AP 1210 27	Cover air filter	1	
5	AP 1211 32	Element air filter	1	
6	AP 1211 25	Holder element A	1	
7	AP 1211 26	Holder element B	1	
8	AP 1211 24	Seal air filter	1	
9	39 1907 01	Screw M5	8	
10	AP 1210 57	Spacer	3	
11	39 1945 04	Flange bolt	5	
12	24 1212 24	Mixture tube (venturi)	1	
13	24 1214 74	Insert for bellow	1	
14	AP 1210 64	Clamp	1	
15	24 1214 72	Assly. Integral Duct comp	1	
16	AP 1210 27	Clamp intake Duct	1	



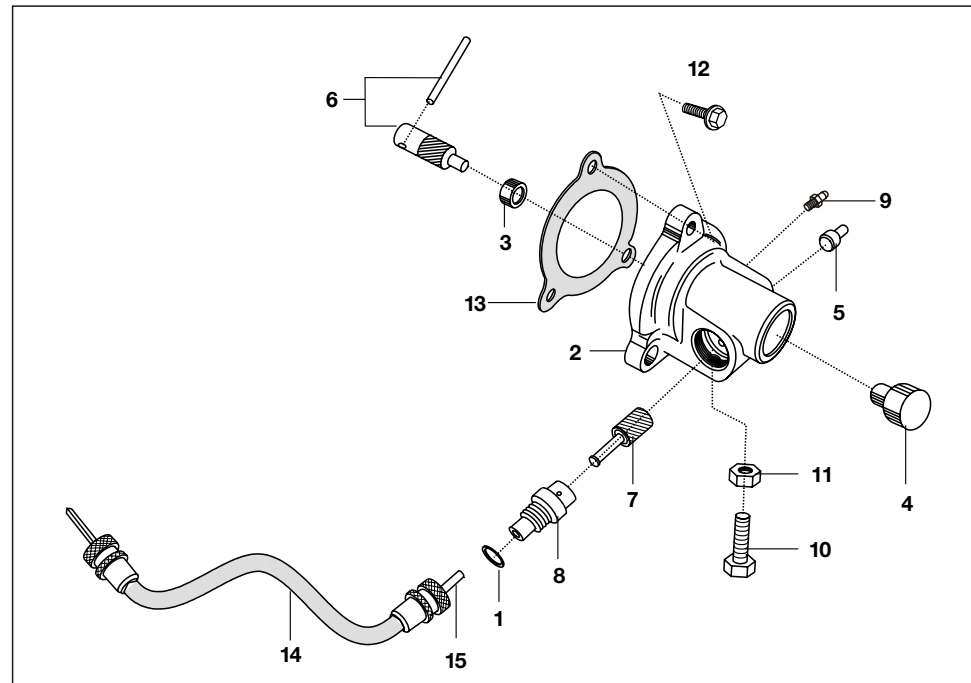
No.	Part No.	Description	Qty/Veh.	Remarks
1	24 1216 57	Manifold	1	
2	AE 1210 45	Gasket for manifold	1	
3	39 2369 15	Flange nut	4	
4	AE 1210 47	Gasket Reed valve	1	
5	AE 1210 01	Reed valve	1	
6	39 0546 01	Screw	2	
7	39 0262 12	Spring washer	2	



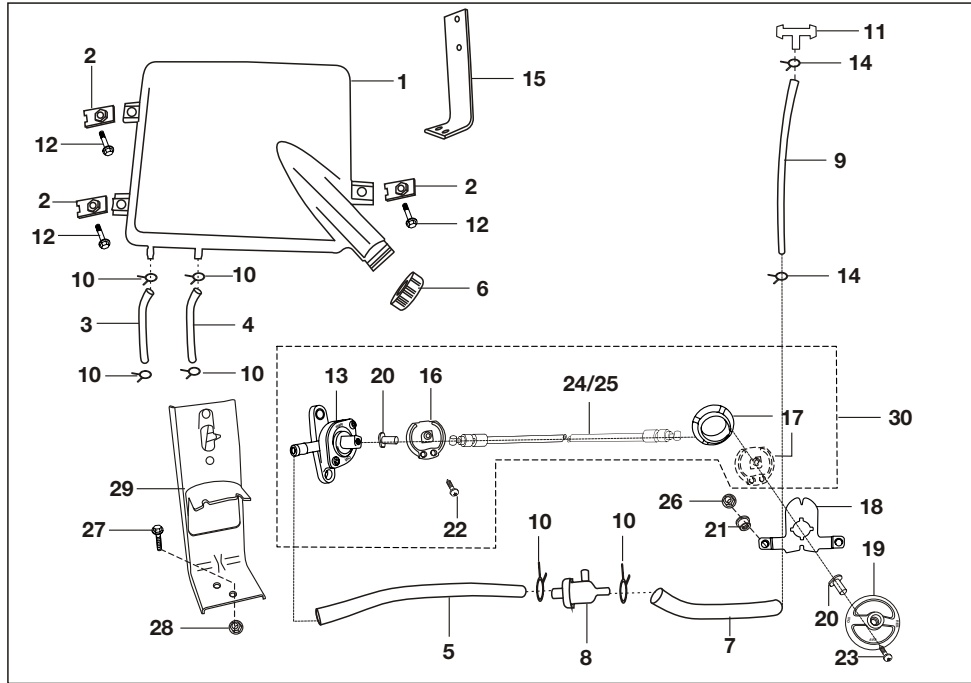
No.	Part No.	Description	Qty/Veh.	Remarks
1	21 1301 10	Ball bearing	1	
2	39 0428 17	Circlip	1	
3	24 1301 05	Ball bearing	2	
4	BA 1321 34	Circlip	1	
5	24 1301 06	Spline shaft	1	
6	39 0337 17	Circlip	1	
7	24 1310 16	Reverse control gear	1	
8	AA 1310 33	Satellite gear hsg. assly.	1	
9	24 1301 11	Bush	1	
10	22 1310 18	Satellite gear	2	
11	22 1310 14	Spacer washer	2	
12	24 1310 32	Satellite gear pin	1	
13	24 1301 13	Locking pin	1	
14	24 1301 14	Gear bevel - 1	1	
15	AE 1310 11	Differential gear	1	
16	24 1310 09	Gear bevel - 2	1	
17	22 1710 80	Lock Plate	3	
18	39 0435 01	Bolts Flanged	6	
19	39 0435 01	Circlip	1	
20	24 1310 75	Oil seal	2	
21	24 1301 18	Idler gear	1	



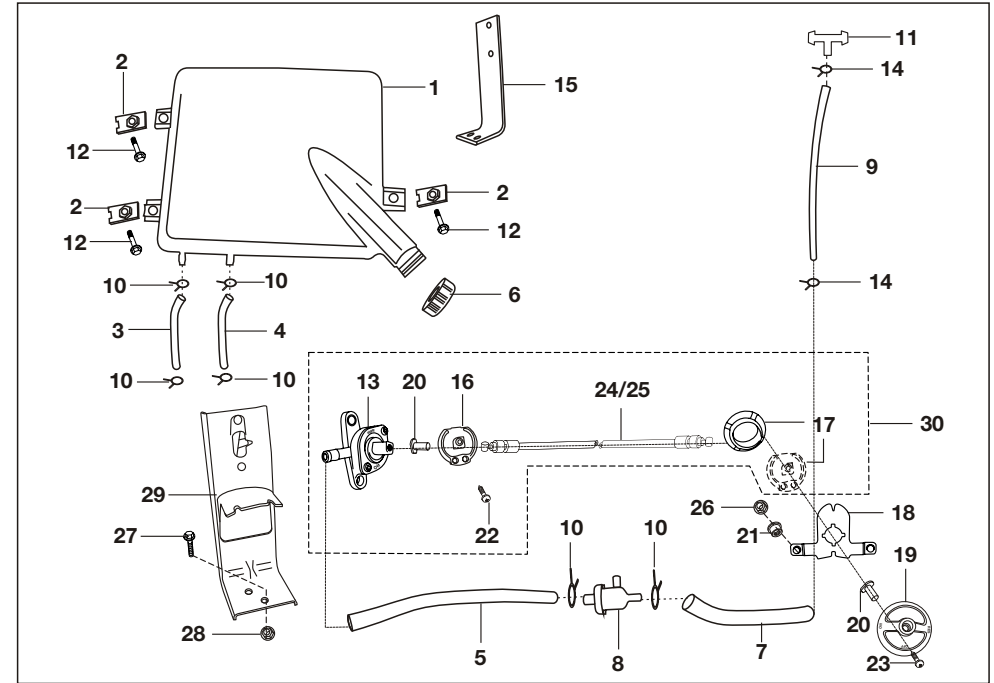
No.	Part No.	Description	Qty/Veh.	Remarks
1	24 1310 78	Differential cover	1	
2	BA 1321 22	Hollow dowel	2	
3	24 1003 05	Bush	1	
4	39 0455 06	Spring dowel sleeve	1	
5	AE 1310 13	Gasket for differential cover	1	
6	39 0089 04	'D' bolt	4	
7	39 2541 04	Bolt short	2	
8	39 2540 04	Bolt long	2	Upto 11-06-2010
	24 1311 01	Bolt Long	2	From 12-06-2010
9	39 2369 15	Flange Nut	8	
10	24 1310 79	Dip stick	1	
11	24 1301 29	Tension spring	1	
12	24 1010 69	Breather assembly	1	
13	24 1310 88	Lever & sector complete	1	
14	01 1009 05	'O' ring	1	
15	24 1310 92	Bkt. reserse cable	1	



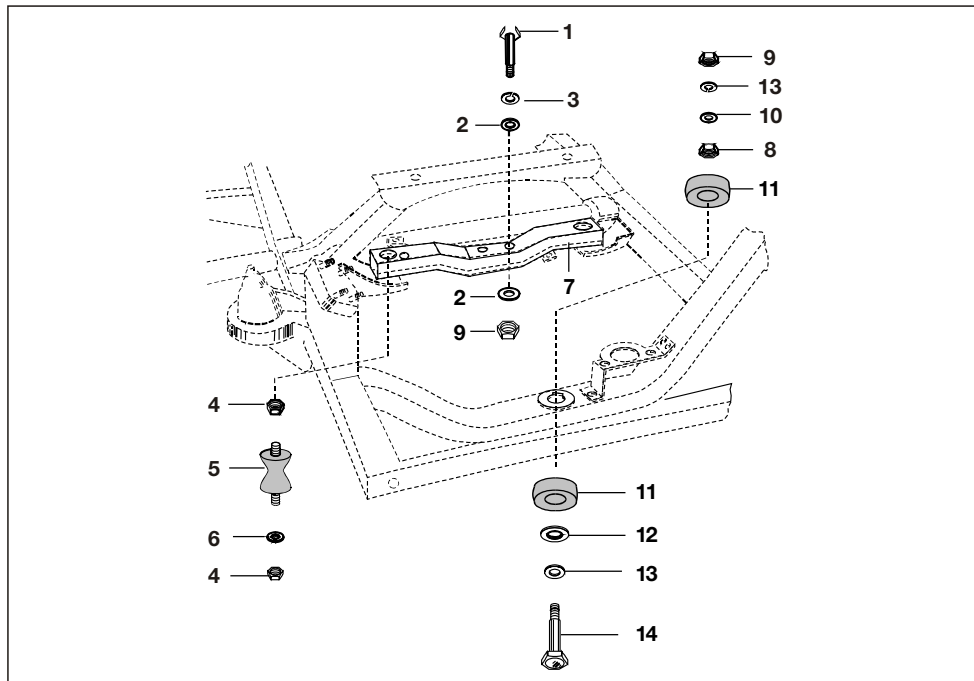
No.	Part No.	Description	Qty/Veh.	Remarks
1	39 1587 21	'O' ring	1	
2	AA 1310 25	Fare meter housing assly	1	
3	AE 1310 03	Plastic bush	1	
4	24 1310 08	Plug	1	
5	03 1701 09	Pin	1	
6	24 1310 01	Faremeter pinion assly	1	
7	24 1302 09	Faremeter gear	1	
8	AE 1310 03	Bush	1	
9	23 1613 05	Grease nipple	1	
10	39 0897 04	Hex bolt	1	
11	39 0292 15	Hex nut	1	
12	59 0400 29	Hex bolt flange type	3	
13	AA 1310 04	Gasket	1	
14	AA 2510 01	Faremeter cable comp.	1	
15	AA 2510 03	Inner cable (Faremeter)	1	



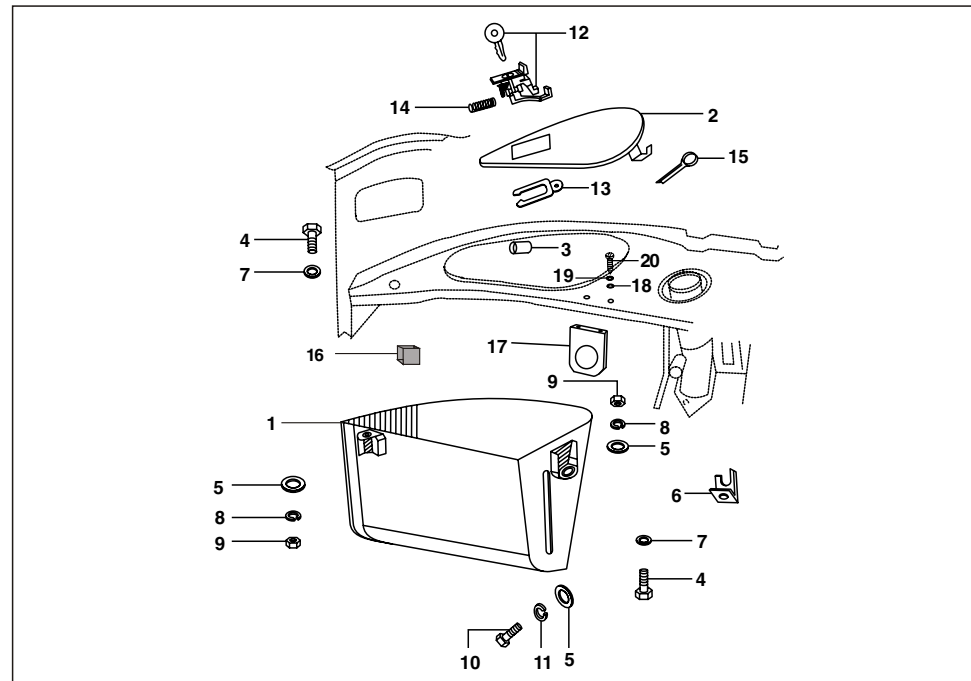
No.	Part No.	Description	Qty/Veh.	Remarks
1	AA 1410 56	Tank fuel side filling	1	
2	24 1612 97	Clip nut	3	
3	24 1411 38	Fuel pipe tank to cock (blue)	1	
4	24 1411 39	Fuel pipe tank to cock (gray)	1	
5	24 1411 40	Fuel tube cock to filter	1	
6	24 1411 50	Cap fuel tank	1	
7	24 1411 41	Fuel tube filter to carbu.	1	
8	24 1216 52	Fuel filter	1	
9	24 1411 13	Breather tube	1	
10	33 1410 07	Clamp	5	
11	BA 1220 05	T joint	1	
12	39 1556 04	Bolts for fuel tank mtg.	1	
13	24 1411 48	Fuel cock assly.	1	
14	BA 1220 03	Fuel pipe clip	4	
15	24 1411 31	Bracket fuel tank mtg	1	



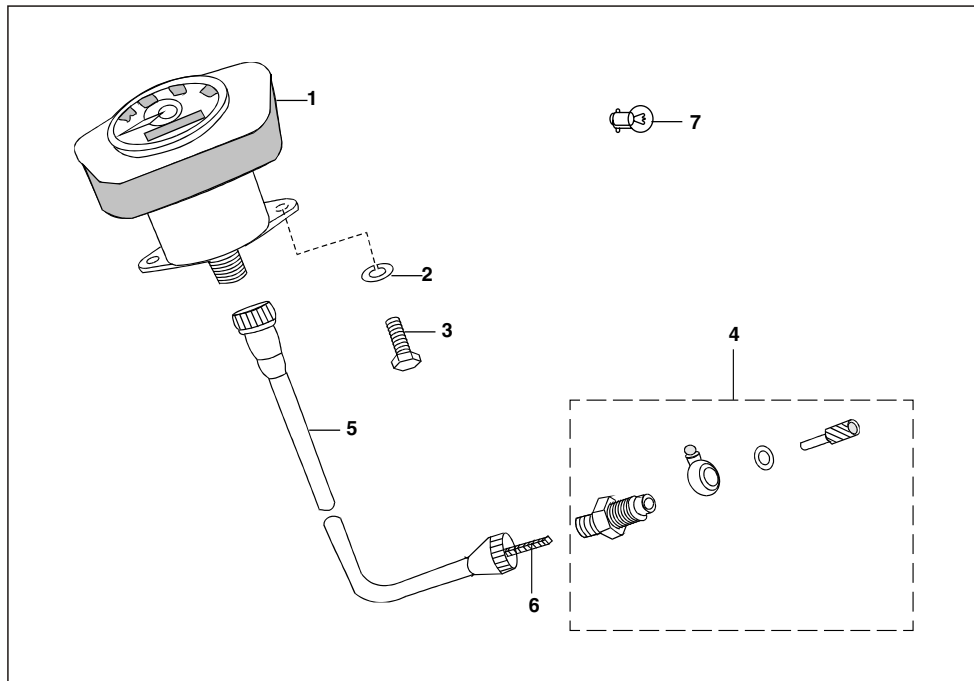
No.	Part No.	Description	Qty/Veh.	Remarks
16	24 1411 32	Pulley tap side	1	
17	24 1411 33	Pulley Knob side	1	
18	24 1411 36	Bracket fuel knob mounting	1	
19	24 1411 37	Knob fuel tap operation	1	
20	24 1411 34	Insert for knob mounting	2	
21	24 1411 35	Spacer for knob mounting	2	
22	39 0009 01	Screw pan cross	1	
23	39 0921 01	Screw pan cross M4	1	
24	24 1911 36	Cable fuel cock operating - Grey	1	
25	24 1911 37	Cable fuel cock operating - Black	1	
26	39 2711 15	Flange nut	2	
27	39 1673 04	Flange bolt	2	
28	39 0798 15	Flange nut	2	
29	AA 1611 55	Bracket fuel cock mounting	1	
30	24 1411 48	Fuel Cock with Cables	1	



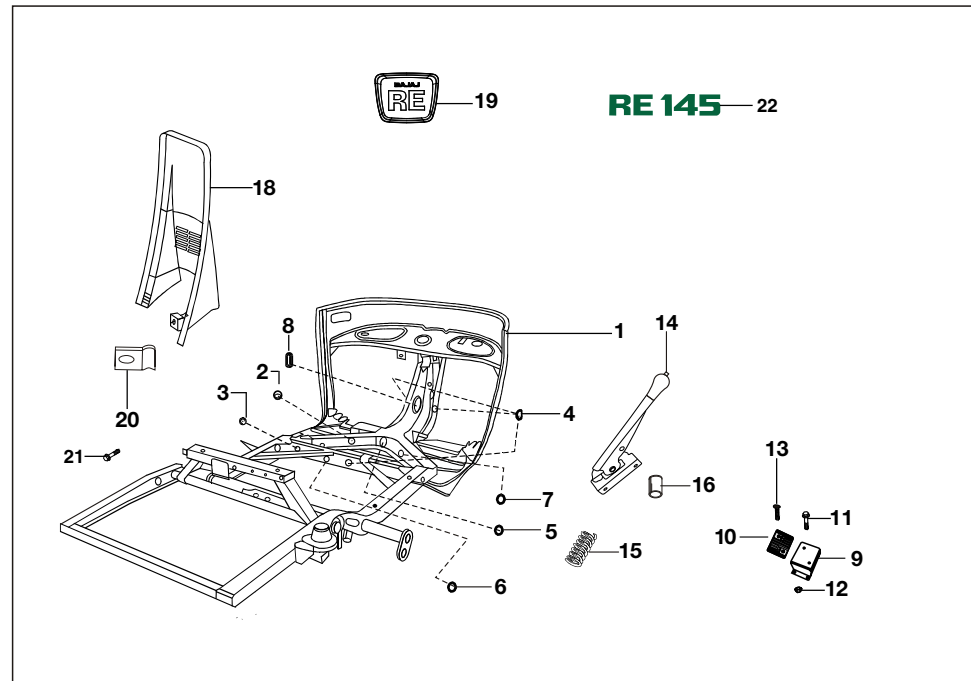
No.	Part No.	Description	Qty/Veh.	Remarks
1	39 0462 04	Bolt for fixing engine to cross member	2	
2	39 0200 11	Plain washer	4	
3	39 0265 12	Spring washer	2	
4	59 1500 12	Nut	4	
5	24 1609 13	Engine foundation block	2	
6	39 1829 12	Spring washer	4	
7	24 1614 54	Cross member assly comp.	1	
8	39 0956 15	Hexagon Nut - M8 x 1.25	2	
9	39 0294 15	Nut	2	
10	39 0248 11	Plain washer	2	
11	24 1609 24	Rubber plug	2	
12	21 1604 17	Reinforcement plate	2	
13	39 0251 11	Plain washer	1	
14	24 16 1003	Bolt for fixing eng. to chassis	1	



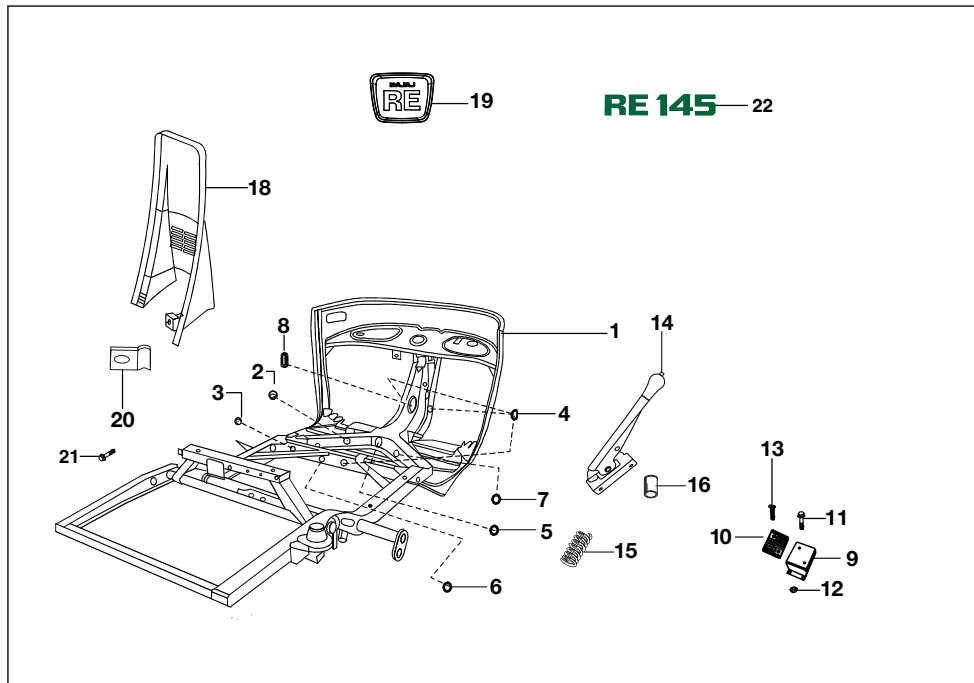
No.	Part No.	Description	Qty/Veh.	Remarks
1	24 1615 04	Tool box	1	
2	22 1608 05	Tool box door assembly	1	
3	22 1611 93	Packing for tool box door	4	
4	01 1605 09	Hexagon bolt	2	
5	39 0211 11	Plain washer	3	
6	24 1613 63	Bracket	1	
7	39 0197 11	Plain washer	2	
8	39 0262 12	Spring washer	2	
9	39 0291 15	Hexagon nut	2	
10	39 0062 04	Hexagon bolt	1	
11	39 0263 12	Spring washer	1	
12	24 1810 59	Lock Set Assly.	1	
13	06 1607 12	Holding plate for lock	1	
14	06 1607 13	Spring for lock	1	
15	39 0156 08	Split pin	1	
16	24 2313 80	Foam strip	1	
17	AB 1610 40	Bracket ignition switch	1	
18	39 0263 12	Spring washer	2	
19	39 0814 11	Plain washer	2	
20	39 1942 04	Flange bolt	2	



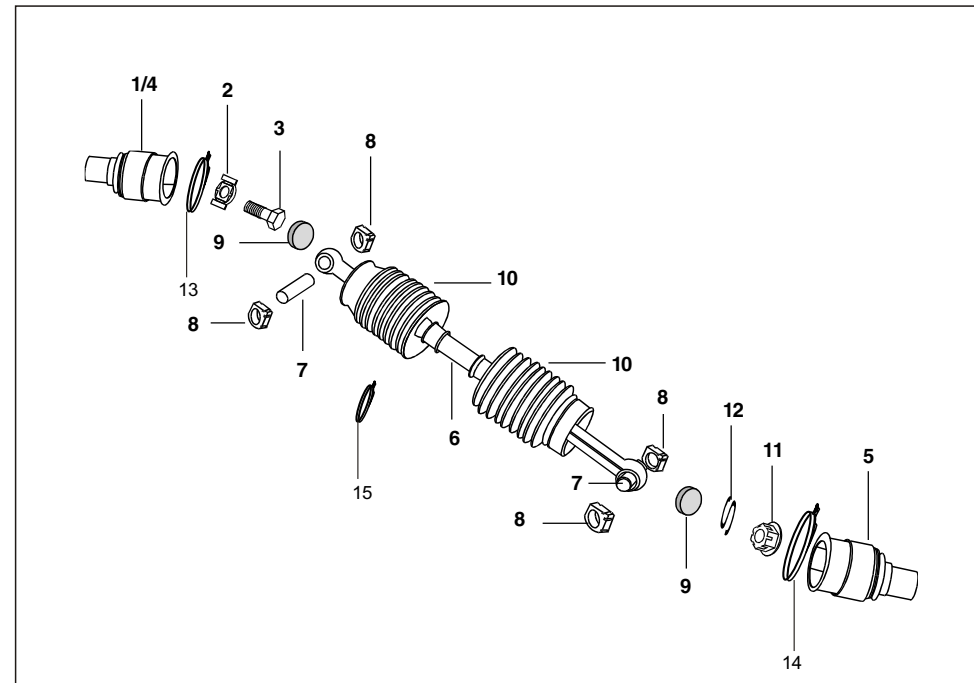
No.	Part No.	Description	Qty/Veh.	Remarks
1	24 1911 08	Speedometer complete	1	
2	39 0262 12	Spring washer	2	
3	39 1350 01	Hexagon screw	2	
4	05 1903 01	Speedometer drive complete	1	
5	22 1910 96	Speedometer cable complete	1	
6	22 1910 97	Speedometer cable inner	1	
7	30 2010 84	Lamp 12V 2w	1	



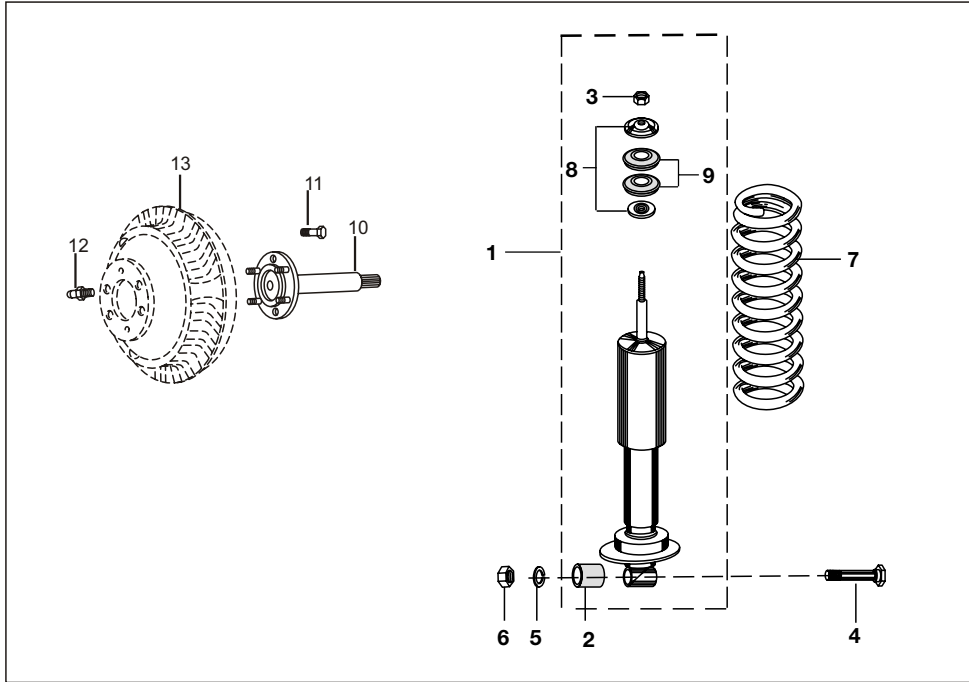
No.	Part No.	Description	Qty/Veh.	Remarks
1	24 1614 27	Bare Chassis Complete	1	
2	22 1611 95	Grommet	1	
3	39 2373 23	Grommet	1	
4	22 2001 61	Grommet	2	
5	39 2508 23	Grommet	1	
6	39 23 7423	Grommet	2	
7	24 1902 24	Grommet	1	
8	24 1810 59	Lock Set	1	
9	24 1613 90	Heel rest (Brake)	1	
10	AL 1511 68	Pad heel rest	1	
11	39 1773 04	Flange bolt	4	
12	39 2484 15	Flange nut	4	
13	19 1611 51	Plug Fixing	4	
14	24 1614 68	Reverse Lever	1	
15	24 1911 44	Reverse spring	1	



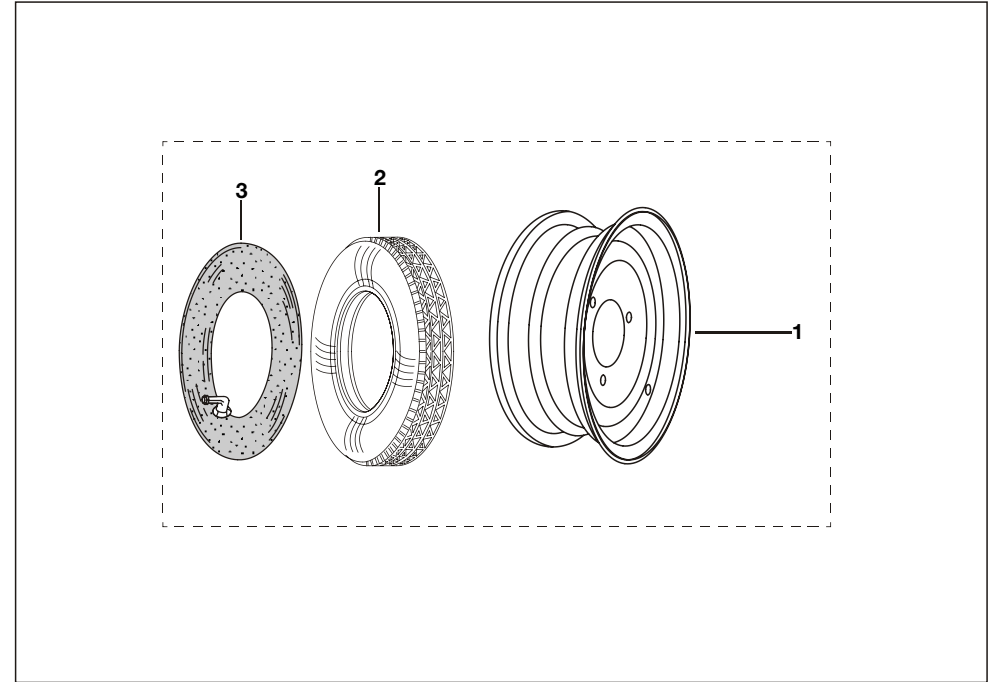
No.	Part No.	Description	Qty/Veh.	Remarks
16	AP 1610 35	Bush	1	N.I
17	AA 1611 66	Matting front	1	
18	24 1614 83	Cover assly. Steering	1	
19	24 1614 84	Emblem Bajaj	1	
20	CB 1611 05	Clip Nut	4	
21	39 1771 02	Screw M5x16	4	
22	24 2315 75	Lable RE 145	1	



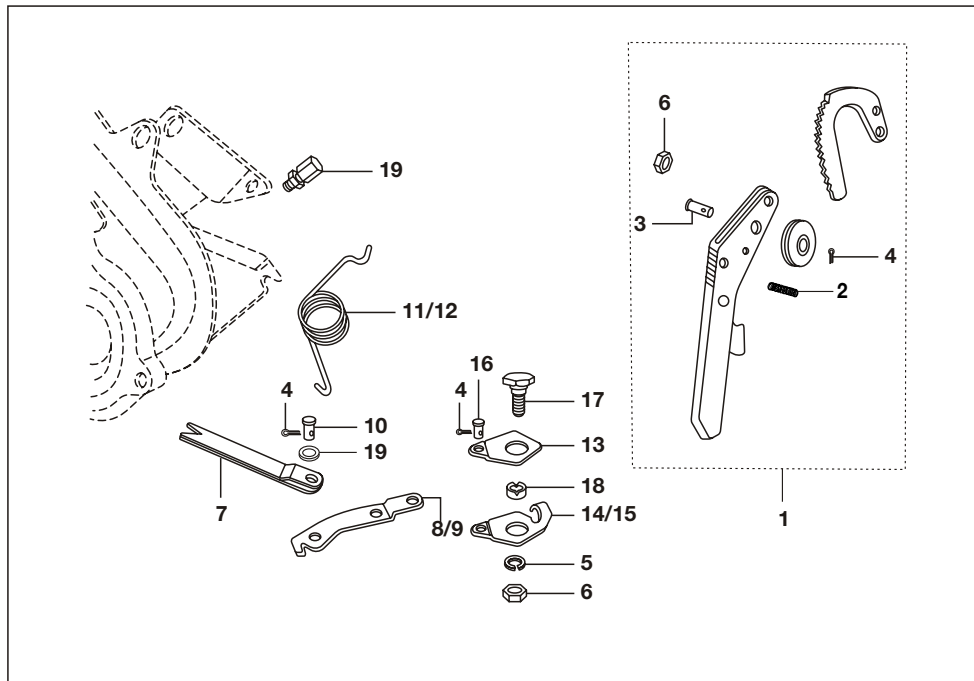
No.	Part No.	Description	Qty/Veh.	Remarks
1	BA 1321 71	Flange assly(Satellite gear)	1	
2	24 1710 14	Lock washer assembly	2	
3	39 0119 04	Bolt	2	
4	BA 1321 72	Flange assly (diff. gear side)	1	
5	24 1310 96	Flange assly (wheel side)	2	
6	24 1310 71	Propeller shaft assembly	2	
7	24 1704 25	Pin for propeller shaft	4	
8	24 1710 68	Slider block	8	
9	24 1704 27	Rubber buffer	4	
10	24 1310 74	Rubber Bellow	4	
11	39 1182 15	Nut	2	
12	24 1710 66	Spring clip	2	
13	BB 1310 24	Clamp-2	2	
14	BB 1310 40	Hose clamp	2	
15	BB 1311 50	Clamp - 3	4	



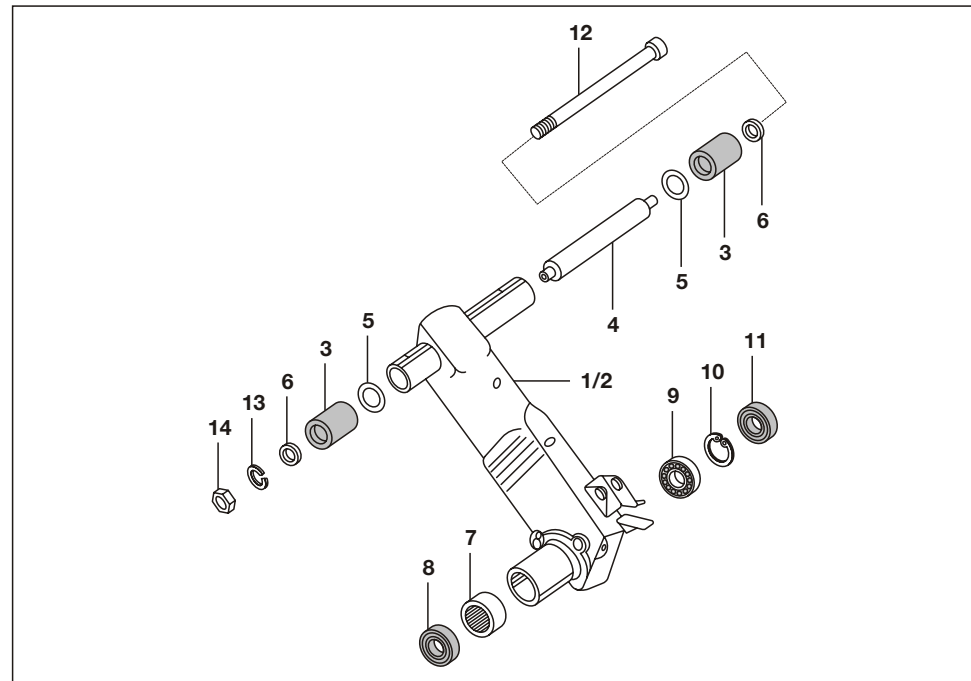
No.	Part No.	Description	Qty/Veh.	Remarks
1	24 1710 94	Rear shock absorber	2	
2	24 1710 49	Mounting rubber with sleeve	2	
3	39 0467 15	Hexagon nut	2	
4	24 1705 07	Bolt for shock absorber	2	
5	39 1827 12	Spring washer	2	
6	39 0467 15	Nut	2	
7	BA 1710 05	Rear suspension spring	2	
8	24 1705 05	Cup washer top side	4	
9	AB 1710 13	Rubber bush	4	
10	24 1711 18	Rear Axle assly.	2	
11	22 1704 34	Bolt for rear axle	4	
12	24 1710 75	Grease nipple	2	
13	22 1511 06	Brake drum rear	2	



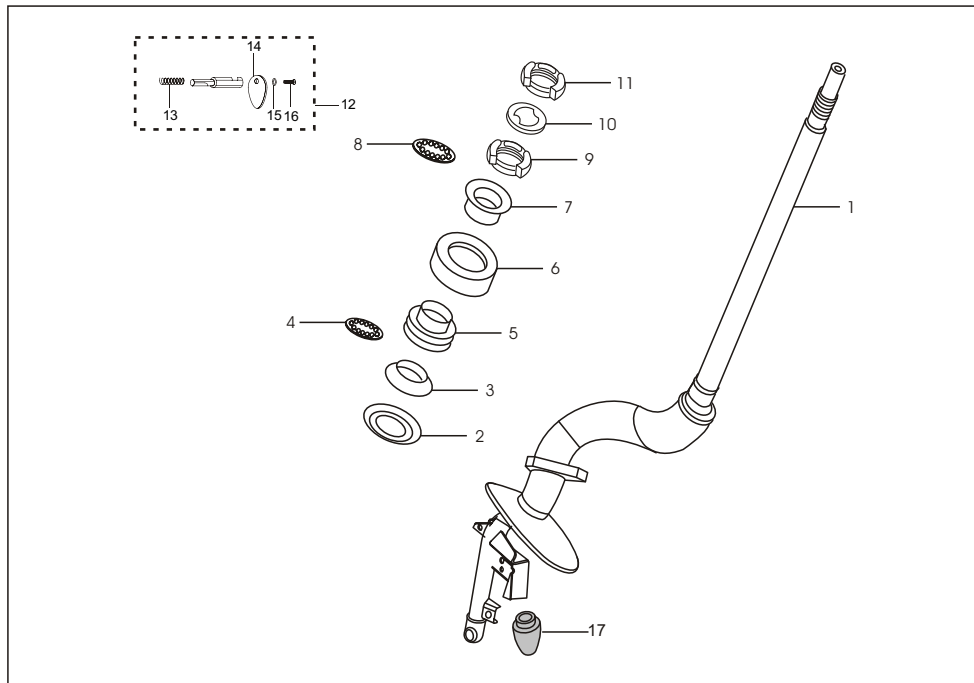
No.	Part No.	Description	Qty/Veh.	Remarks
1	24 1511 10	Wheel rim assly	4	
2	21 1503 07	Tyre 4.00 x 8"	4	
3	21 1503 06	Tube for tyre	4	



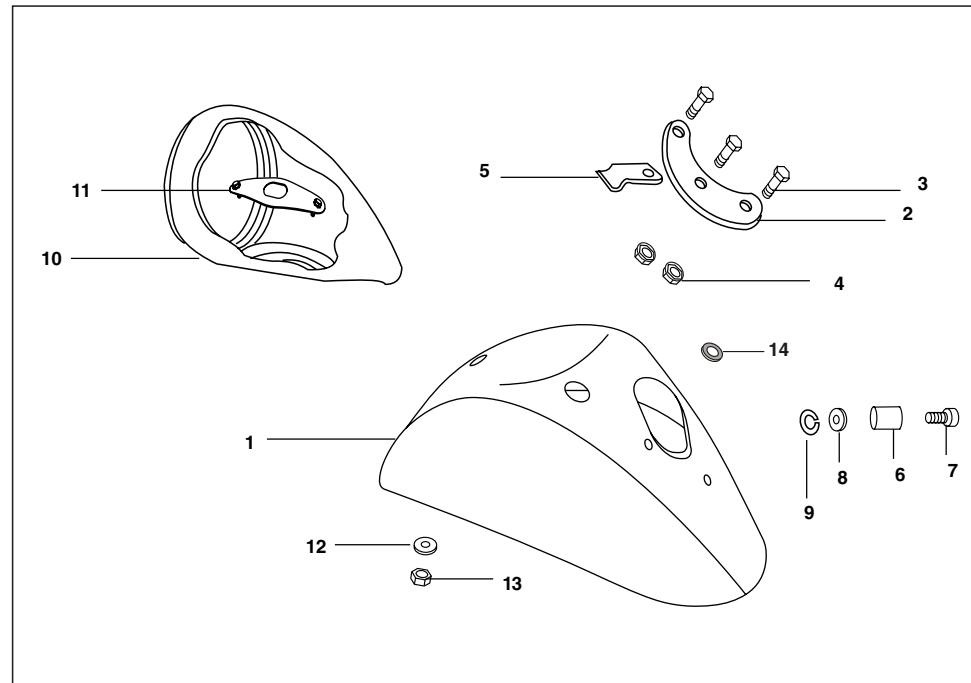
No.	Part No.	Description	Qty/Veh.	Remarks
1	24 1510 61	Hand brake comp.	1	
2	22 1505 24	Spring	1	
3	21 1504 20	Fork pin	1	
4	24 1511 47	Split pin	2	
5	39 1828 12	Spring washer	1	
6	39 0694 15	Flange Nut	2	
7	22 1505 15	Hand brake strut	2	
8	24 1511 54	Hand brake lever RH	1	
9	24 1511 45	Hand brake lever LH	1	
10	24 1511 46	Pin pivot	1	
11	24 1505 06	Return spring RH	1	
12	24 1505 07	Return spring LH	1	
13	22 1505 20	Link	2	
14	22 1510 63	Plate LH	1	
15	22 1510 64	Plate RH	1	
16	22 1505 25	Pin	2	
17	39 0106 04	Bolt	2	
18	22 1505 22	Distance piece	2	
19	24 1511 48	Plain washer	2	



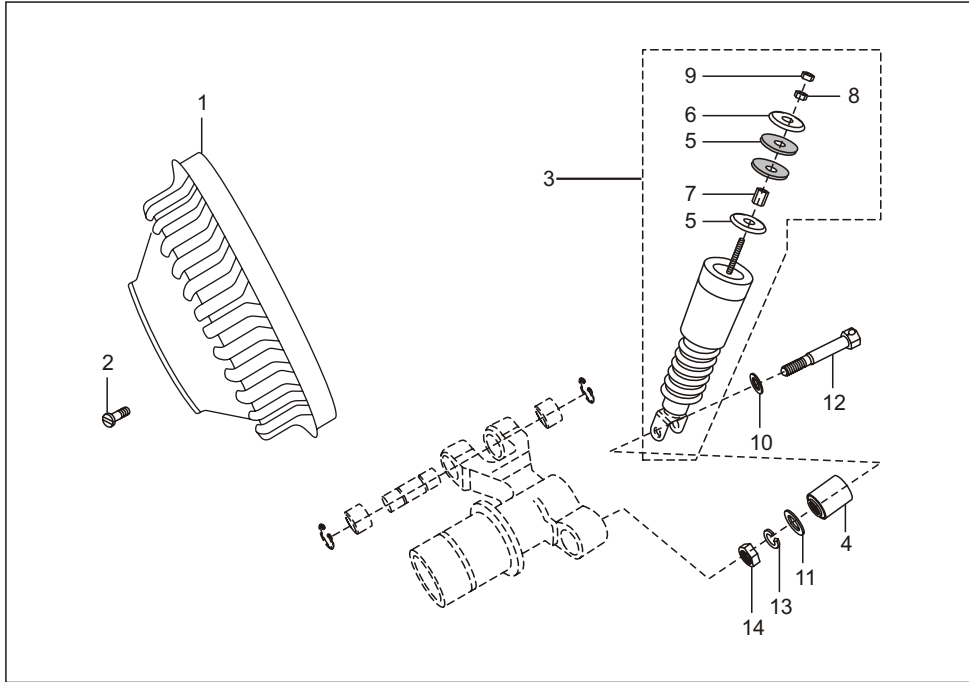
No.	Part No.	Description	Qty/Veh.	Remarks
1	24 1711 20	Trailing arm assembly LH	1	
2	24 1711 21	Trailing arm assembly RH	1	
3	AA 1710 06	Silent bush	4	
4	AA 1710 07	Distance piece assly	2	
5	05 1010 56	Spacer sintered	4	
6	01 1003 23	Washer	4	
7	59 2000 12	Needle bearing	1	
8	22 1710 07	Oil seal	2	
9	01 1003 42	Bearing	2	
10	39 0342 17	Circlip	2	
11	24 1710 24	Oil seal	2	
12	AA 1710 11	Pivot pin assembly	2	
13	39 0269 12	Spring washer	2	
14	39 0303 15	Nut	2	



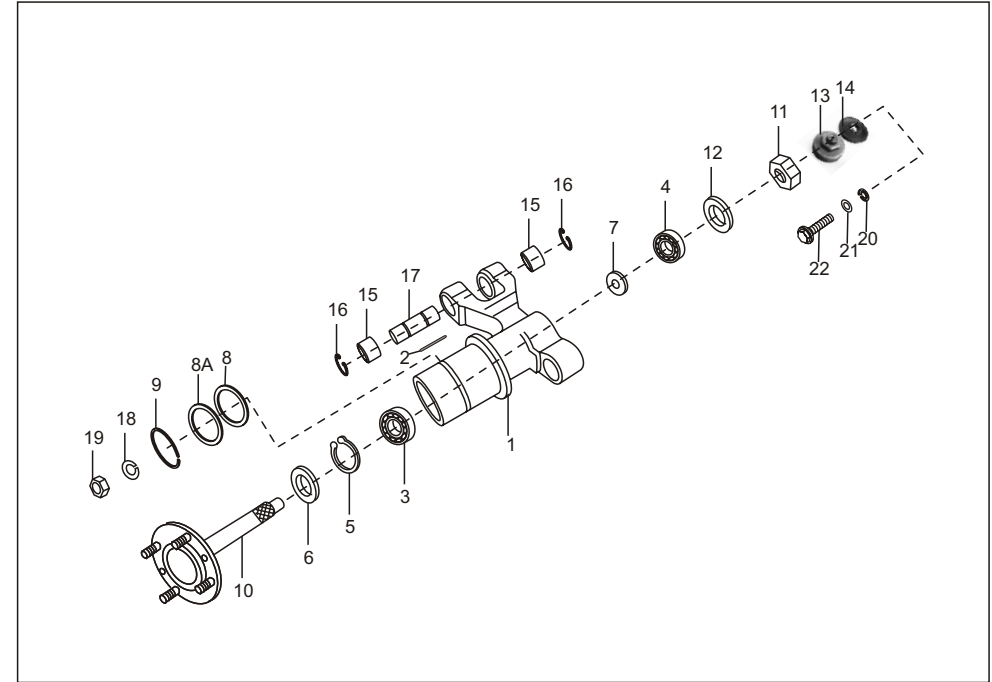
No.	Part No.	Description	Qty/Veh.	Remarks
1	24 1810 43	Steering column assembly	1	
2	24 1810 34	Dust cover bottom	1	
3	AB 1810 11	Bearing race -low inner	1	
4	AB 1810 12	Steel ball with cage lower	1	
5	AB 1810 33	Bearing race lower outer	1	
6	24 1810 33	Dust cover top bearing	1	
7	AB 1810 16	Bearing race lower outer	1	
8	AB 1810 17	Steel ball with cage upper	1	
9	AB 1810 19	Bearing race-upper outer	1	
10	AB 1810 20	Spacer washer bearing	1	
11	AB 1810 21	Look ring upper race	1	
12	24 1810 16	Steering look with key	1	
13	06 1803 03	Spring	1	
14	15 1810 32	Cover plate	1	
15	151 810 33	Spring Washer drive	1	
16	15 1810 34	Hammer Screw	1	
17	22 1810 44	Buffer rubber	1	



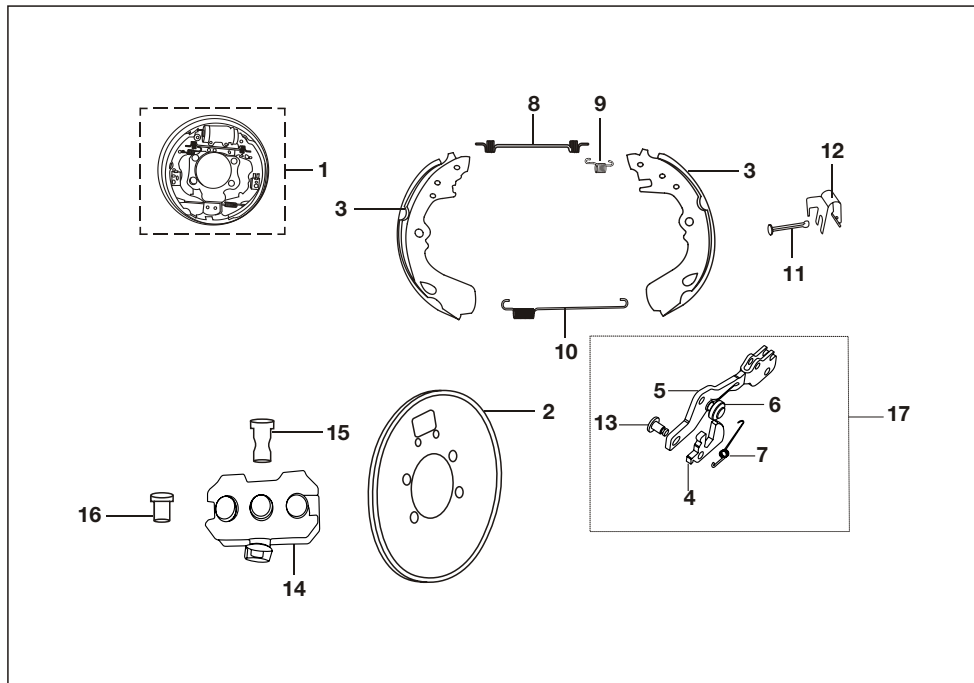
No.	Part No.	Description	Qty/Veh.	Remarks
1	AB 1611 88	Front mudguard	1	
2	AB 1611 82	Check plate front mudguard	1	
3	39 1993 04	Bolt hexagon head	3	
4	39 0292 15	Flange nut	3	
5	AB 1611 59	Clip	1	
6	24 1710 95	Spacer	2	
7	39 0080 04	Hexagon bolt	1	
8	39 1211 11	Plain washer	2	
9	39 0263 12	Spring washer	2	
10	AB 2010 65	Housing head light	1	
11	AB 1611 83	Check plate assly. H.L.hsg.	1	
12	39 019811	Plain washer	2	
13	39 1350 15	Nyloc nut	2	
14	15 1410 13	Grommet	1	



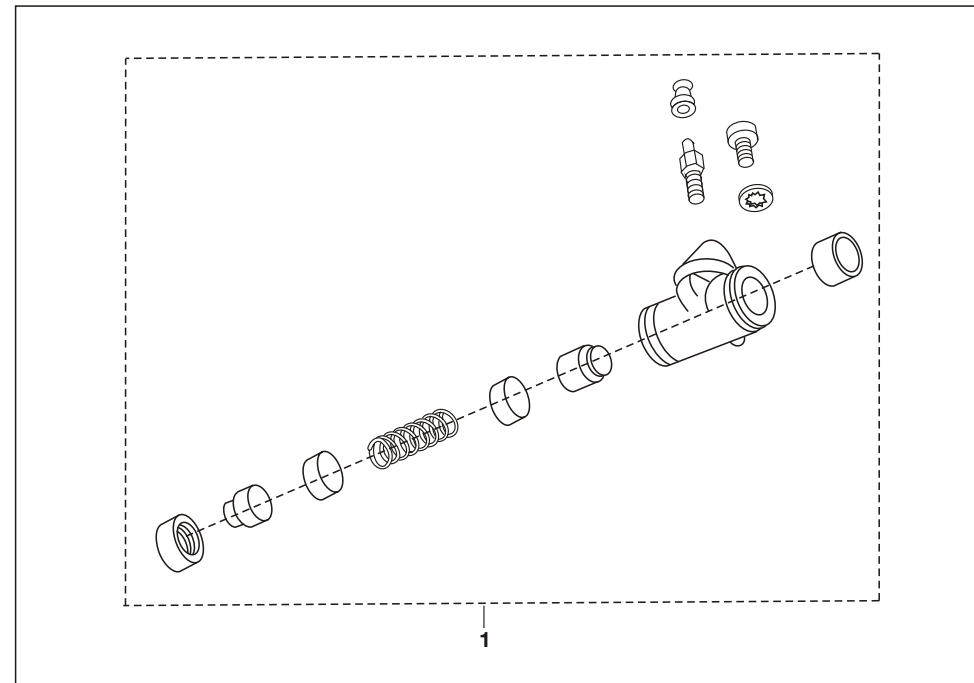
No.	Part No.	Description	Qty/Veh.	Remarks
1	22 1511 06	Brake drum	1	
2	39 0001 01	Slot csk hd screw	2	
3	AB 1710 44	Front shock absorber	1	
4	AB 1710 16	Bush	1	
5	AB 1710 13	Top rubber bush	2	
6	AB 1710 14	Locating cup rubber bush	2	
7	AB 1710 15	Spacer nut spring cup	1	
8	39 0295 15	Hexagon nut	1	
9	39 0301 15	Hexagon nut	1	
10	39 0543 11	Plain washer	1	
11	39 1054 11	Plain washer	1	
12	AB 1710 31	Shoulder bolt	1	
13	39 0789 12	Washer spring	1	
14	39 0296 15	Hexagon nut	1	



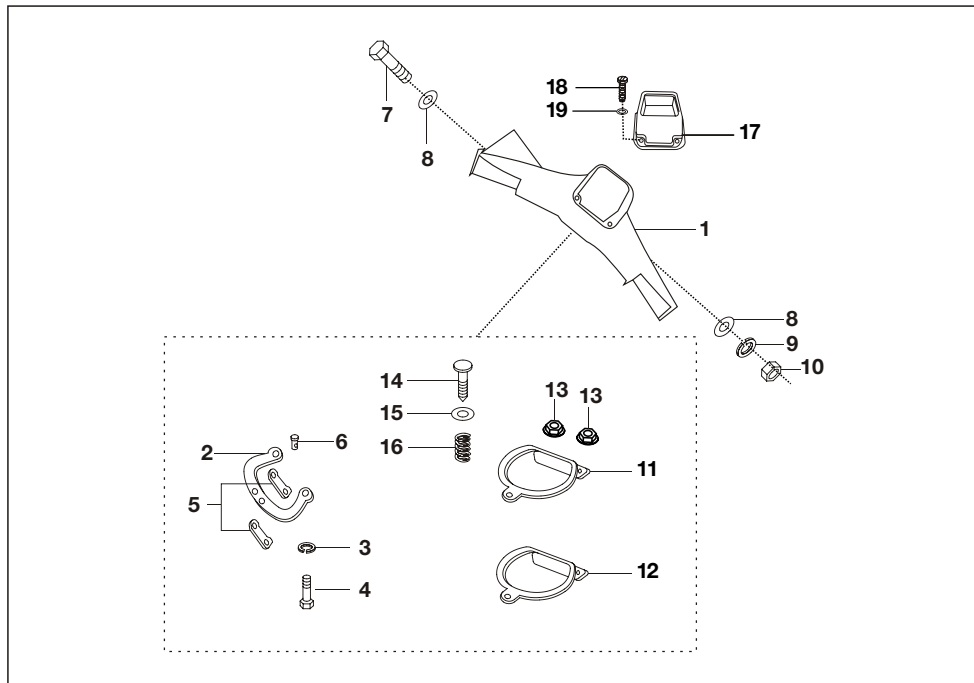
No.	Part No.	Description	Qty/Veh.	Remarks
1	24 1711 36	Front wheel hub assly	1	
2	03 1701 09	Pin	1	
3	39 2550 20	Ball bearing	1	
4	39 23 6220	Bearing	1	
5	39 0342 17	Intrnal circlip	1	
6	22 1701 15	Oil seal	1	
7	22 1701 17	Spacer	1	
8	AB 1710 32	Belleville washerl	1	
8A	AB 1710 33	Spacer -Barke panel	1	
9	39 2444 17	External circlip	1	
10	AB 1710 34	FR wheel axle assly	1	
11	01 1701 19	Nut	1	
12	22 1701 18	Spacer	1	
13	AB 1710 22	Grease cup nut	1	
14	AB 1710 23	Cap-FR wheel hub	1	
15	AB 1710 20	Needle bush	2	



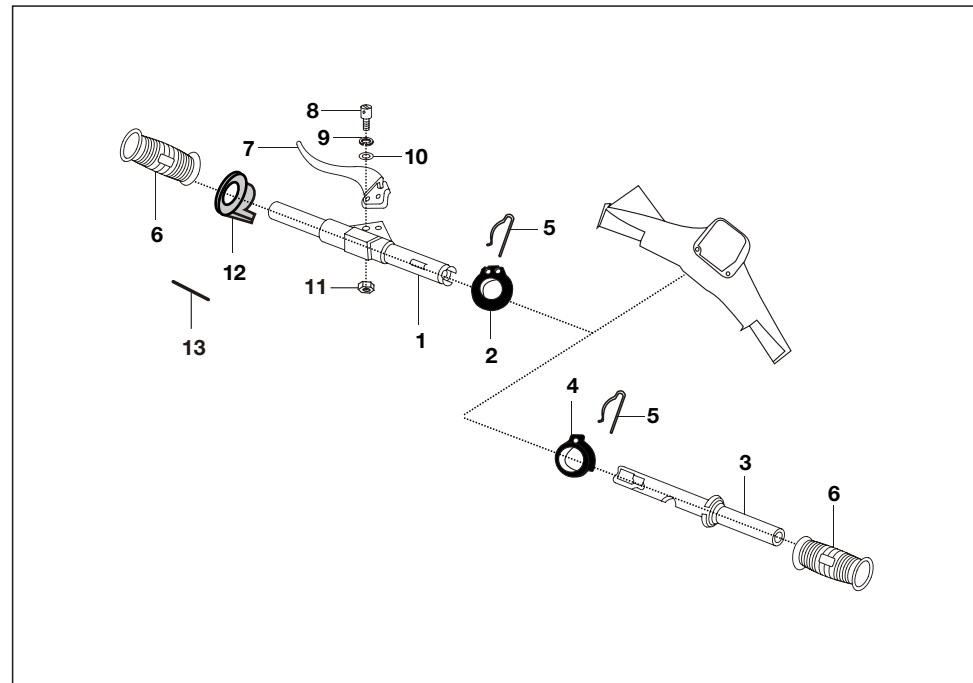
No.	Part No.	Description	Qty/Veh.	Remarks
14	24 1510 67	Bracket rear cable guide	1	
15	24 1510 68	Pin rear cable guide	1	
16	24 1510 69	Spacer	1	
17	24 1511 69	Strut assembly front Complete	1	
	24 1511 76	Strut assembly LH Complete	1	
	24 1511 80	Strut assembly RH Complete	1	
18	24 1511 70	Ratchet kit (Fr. & LH)	1	Include Fig. 4,7 & 13
	24 1511 81	Ratchet kit (RH)	1	Include Fig. 4,7 & 13
19	24 1511 71	Brake shoe kit	1	Include Fig. 3,11 & 12
20	24 1511 72	Shoe clamp spring kit	1	Include Fig. 11 & 12
21	24 1511 73	Spring kit (Common for Front & LH)	1	Include Fig. 8,9 &10
	24 1511 82	Spring Kit RH	1	Include Fig. 8,9 &10
22	24 1511 68	Auto Adjuster assly front	1	Include Fig. 5 & 6
	24 1511 75	Auto adjuster assly rear LH	1	Include Fig. 5 & 6
	24 1511 79	Auto adjuster assly rear RH	1	Include Fig. 5 & 6



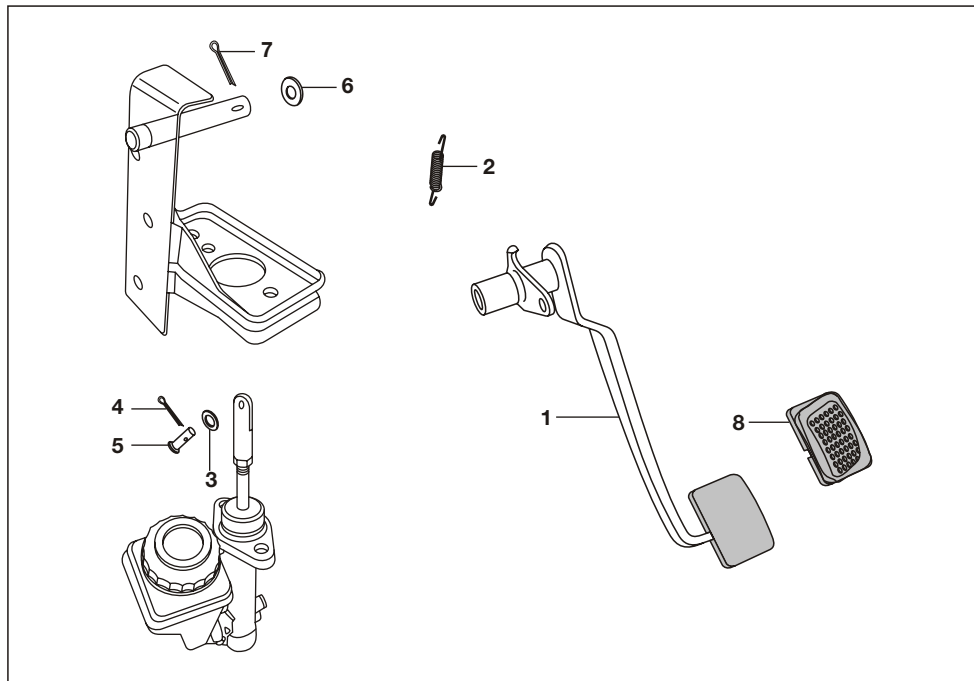
No.	Part No.	Description	Qty/Veh.	Remarks
1	24 1511 63	Wheel Cylinder assly. Front	1	
2	24 1511 07	Major kit	1	N.I
3	24 1511 14	Minor kit	1	N.I



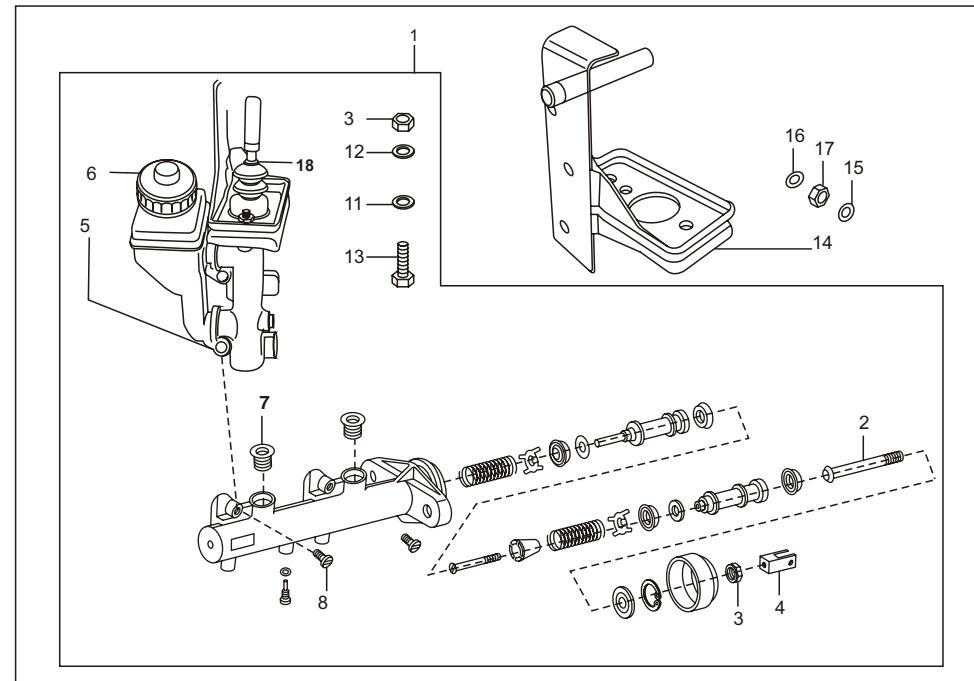
No.	Part No.	Description	Qty/Veh.	Remarks
1	22 1810 25	Handle Bar Body	1	
2	22 1810 58	Steering lock plate	1	
3	39 1830 12	Spring washer	2	
4	39 1379 04	Hex head screw	2	
5	21 1802 07	Lining -Steering lock plate	2	
6	39 0192 10	Eyelet rivet	2	
7	39 1377 04	Hex. bolt with collar	1	
8	39 0201 11	Plain washer	2	
9	39 1829 12	Spring washer	1	
10	39 0296 15	Hex nut	1	
11	AB 1810 22	Lower plate assly	1	
12	24 1810 51	Upper plate assembly	1	
13	39 2295 15	Flange nut	2	
14	21 1803 07	Knob	1	
15	39 0198 11	Plain washer	1	
16	21 1803 08	Spring	1	
17	AP 1810 09	Handle bar top cover	1	
18	KU BC04 10	Screw	3	
19	39 2451 11	Plain Washer	3	



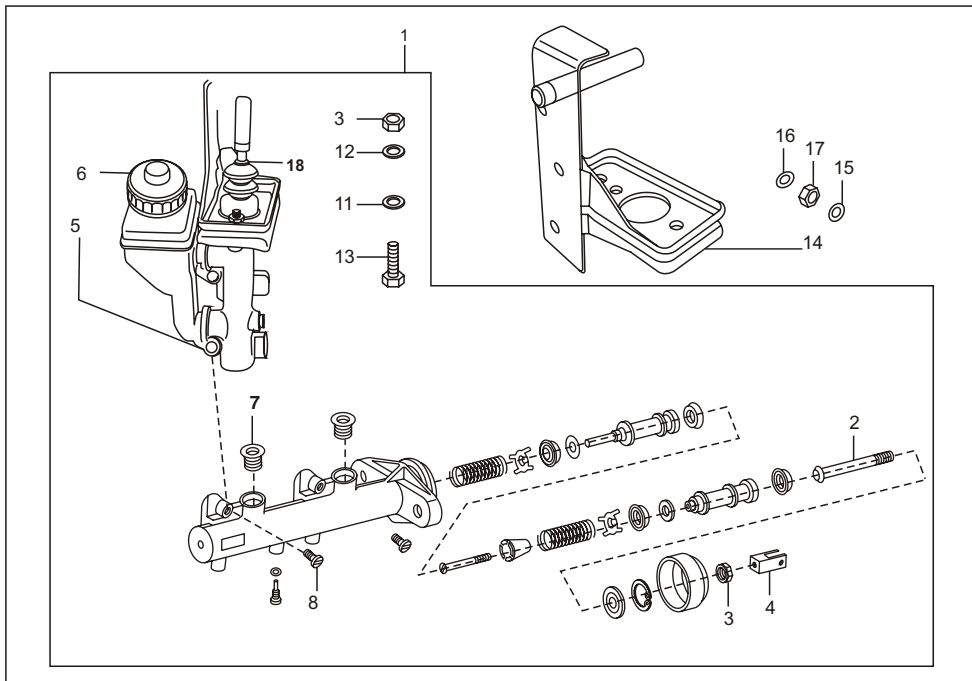
No.	Part No.	Description	Qty/Veh.	Remarks
1	24 1910 96	Tube assembly gear control	1	
2	24 1911 00	Pulley gear control	1	
3	24 1910 98	Tube assly. comp. - throtl.	1	
4	24 1911 01	Pulley gas control	1	
5	CM 1910 49	Spring clip	2	
6	06 1910 89	Hand grip	2	
7	AA 1910 32	Clutch lever	1	
8	24 1911 98	Special screw	1	
9	01 1902 05	Spring washer	1	
10	03 1902 06	Plain washer	1	
11	39 0326 15	Nylock nut	1	
12	24 1910 99	Ring gear indicator	1	
13	LH C000 01	Spring clip	1	



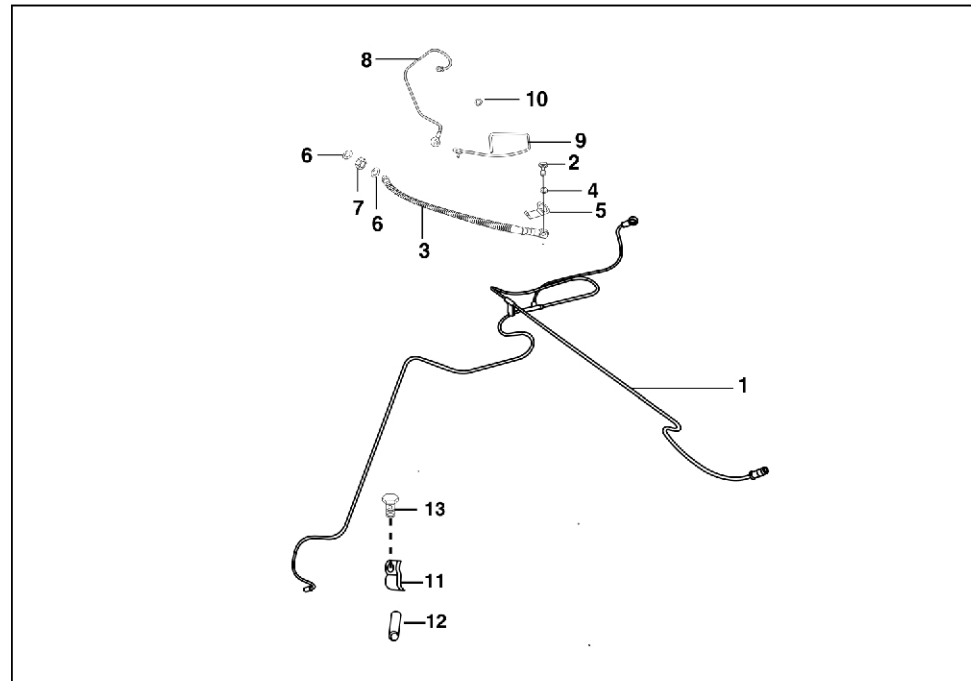
No.	Part No.	Description	Qty/Veh.	Remarks
1	AB 1511 26	Brake pedal assembly	1	
2	AB 1510 14	Spring brake pedal retainer	1	
3	39 0208 11	Plain washer	2	
4	39 0630 08	Split pin	1	
5	39 1702 07	Clevis pin with head	1	
6	39 0199 11	Plain washer	1	
7	39 0146 08	Split pin	1	
8	BA 1910 29	Pad Brake pedal	1	



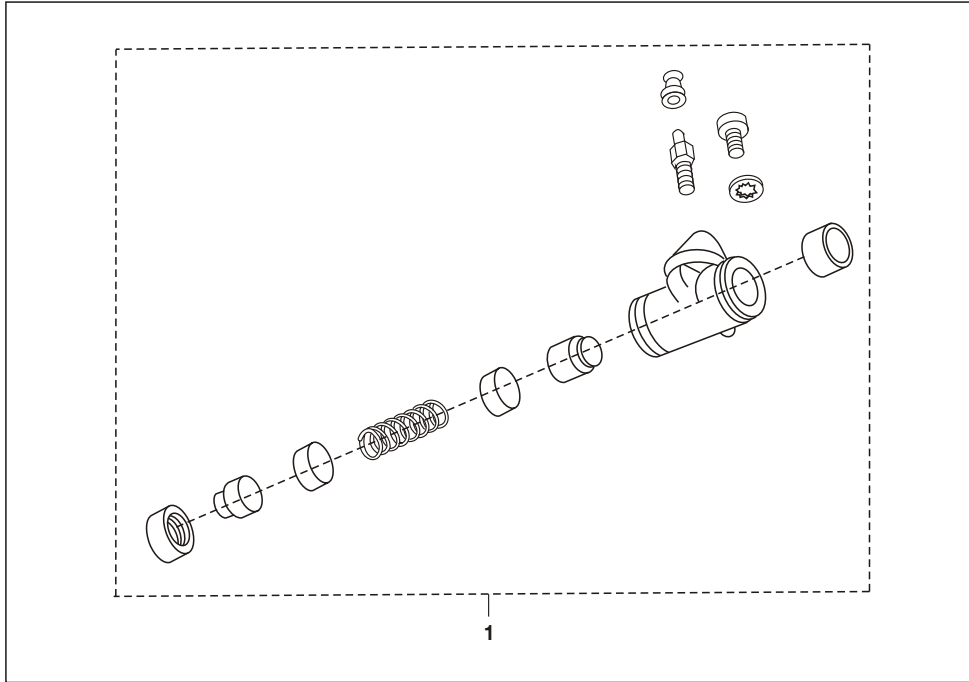
No.	Part No.	Description	Qty/Veh.	Remarks
1	AB 1510 63	TMC comp with oil container	1	For KBX
	24 1511 55	TMC comp with oil container	1	For Endurance
2	AB 1510 69	Push rod complete	1	For KBX
	24 1510 87	Push rod complete	1	For Endurance
3	39 0294 15	Hexagon nut	3	For KBX
	24 1510 94	Hexagon nut	3	For Endurance
4	AB 1510 07	Fork brake actuation	1	For KBX
	24 1510 90	Fork rod push	1	For Endurance
5	AB 1511 04	Oil container with cap	1	For KBX
	AB 1510 54	Oil container with cap	1	For Endurance
6	AB 1511 05	Cap br. oil reservoir	1	For KBX
	AB 1510 72	Cap br. oil reservoir	1	For Endurance
7	AB 1510 71	Grommet oil reservoir	2	For KBX
8	39 0761 01	Screw pan cross	2	For KBX
	24 1510 93	Screw reservoir mgt.	2	For Endurance
9	AB 1510 73	Major kit	1	For KBX
	24 1510 97	Major kit	1	For Endurance
10	AB 1510 74	Minor kit	1	For KBX
	24 1510 98	Minor kit	1	For Endurance



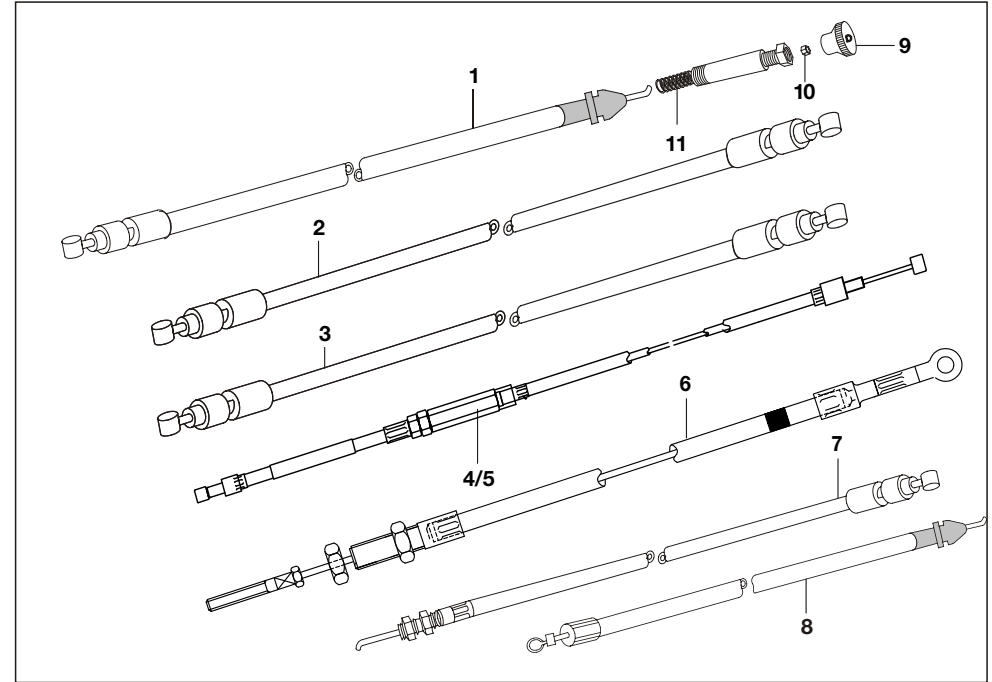
No.	Part No.	Description	Qty/Veh.	Remarks
11	39 1224 11	Plain washer	2	
12	39 1582 11	Plain washer	2	
13	39 1389 04	Hexagon bolt	2	
	24 1510 95	Hexagon bolt	2	
14	BA 1611 34	Bracket master cylinder mtg.	1	
15	39 0200 11	Plain washer	3	
16	39 0265 12	Plain washer	3	
17	39 0310 15	Hex nut	3	
18	24 1510 79	Boot ring	1	



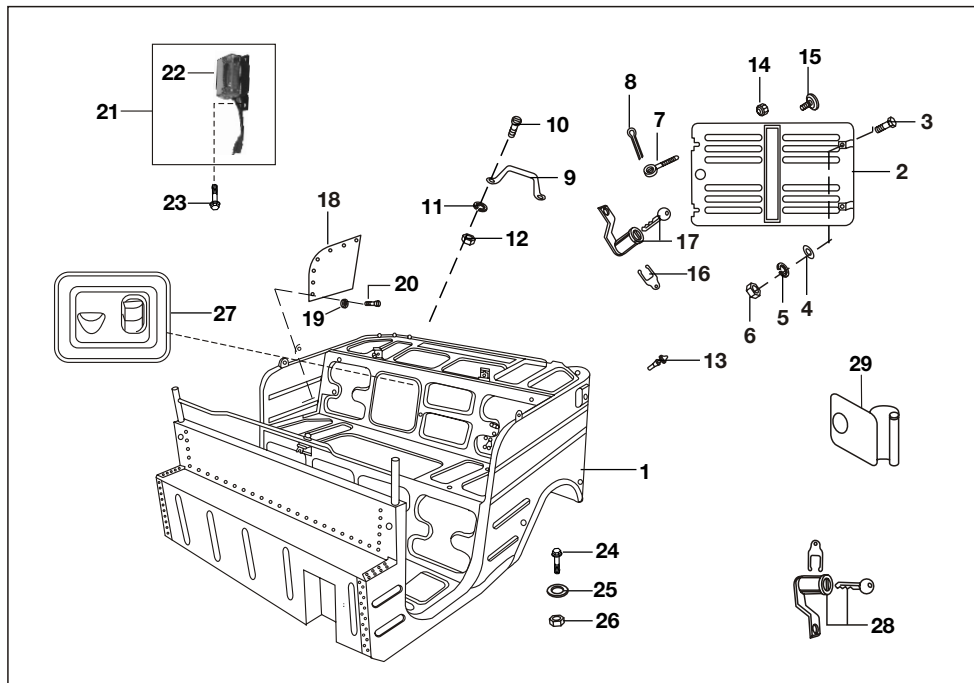
No.	Part No.	Description	Qty/Veh.	Remarks
1	AA151036	Single piece brake pipe	1	
2	21150422	Packing	2	
3	AB151048	Flexible brake front	2	
4	AB151049	Banjo bolt	1	
5	AB151051	Lock clip banjo bolt	1	
6	39166311	Plain washer	2	
7	39175315	Hexagon nut	1	
8	AB151052	Brake pipe assly front	1	
9	DD161013	Guide flexible hose	1	
10	21150422	Packing	2	
11	22161208	Clamp for sleeve	2	
12	24150406	Sleeve	2	
13	22150435	Hex bolt	2	
14	BG 1138 04	Clamp for Brake Pipe	1	



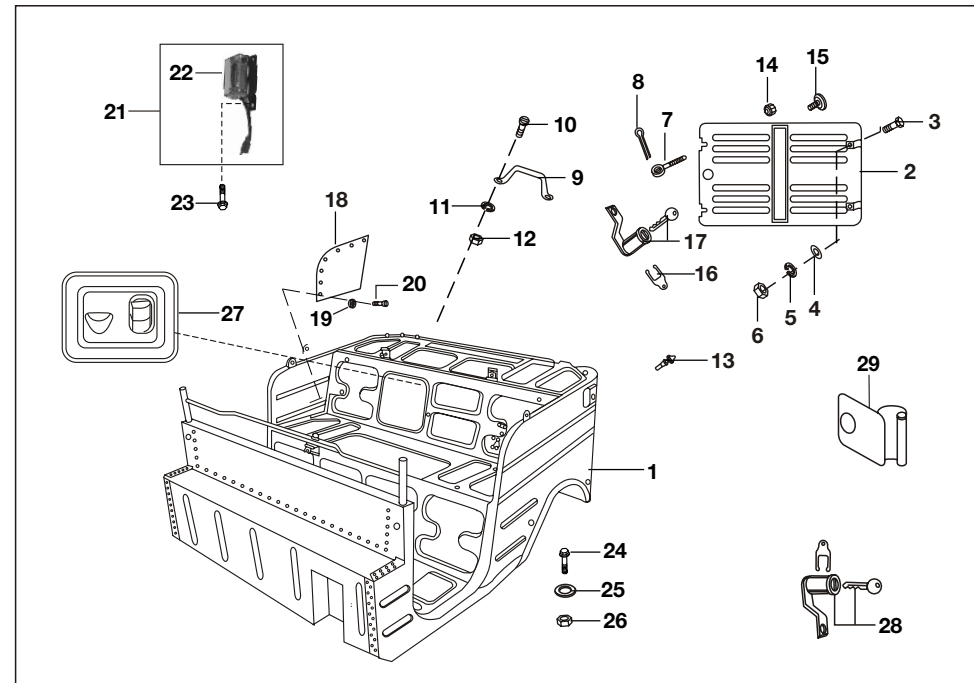
No.	Part No.	Description	Qty/Veh.	Remarks
1	24 1511 64	Wheel Cylinder Rear	1	
2	24 1511 07	Major kit	1	N.I
3	24 1511 14	Minor kit	1	N.I



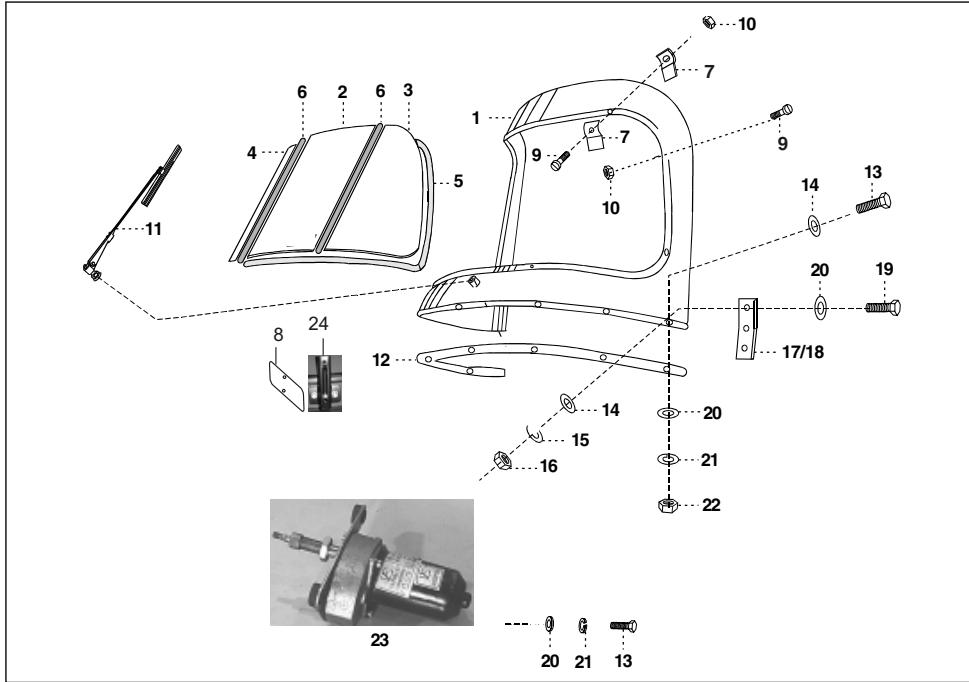
No.	Part No.	Description	Qty/Veh.	Remarks
1	24 1911 29	Choke cable comp	1	
2	24 1911 45	Acceleration cable assly.	1	
3	24 1911 46	Cable comp clutch fix end	1	
4	24 1911 02	Gear Cable assly.	1	White
	24 1911 34	Gear Cable Assly (fixed end)	1	White
5	24 1911 03	Gear Cable assly.	1	Black
	24 1911 35	Gear Cable Assly (fixed end)	1	Black
5A	24 1910 80	Gear Inner Cable	1	N.I,
6	BG 1318 02	Cable Assly. H/Br. Front	1	
7	24 1510 59	Cable Assly. H/Br. Rear LH	1	
	24 1510 60	Cable Assly. H/Br. Rear RH	1	
8	24 1911 39	Rev. Cable assly.	1	
9	AL 1910 39	Knob	1	
10	39 0291 15	Nut	1	
11	AL 1910 26	Release Spring	1	



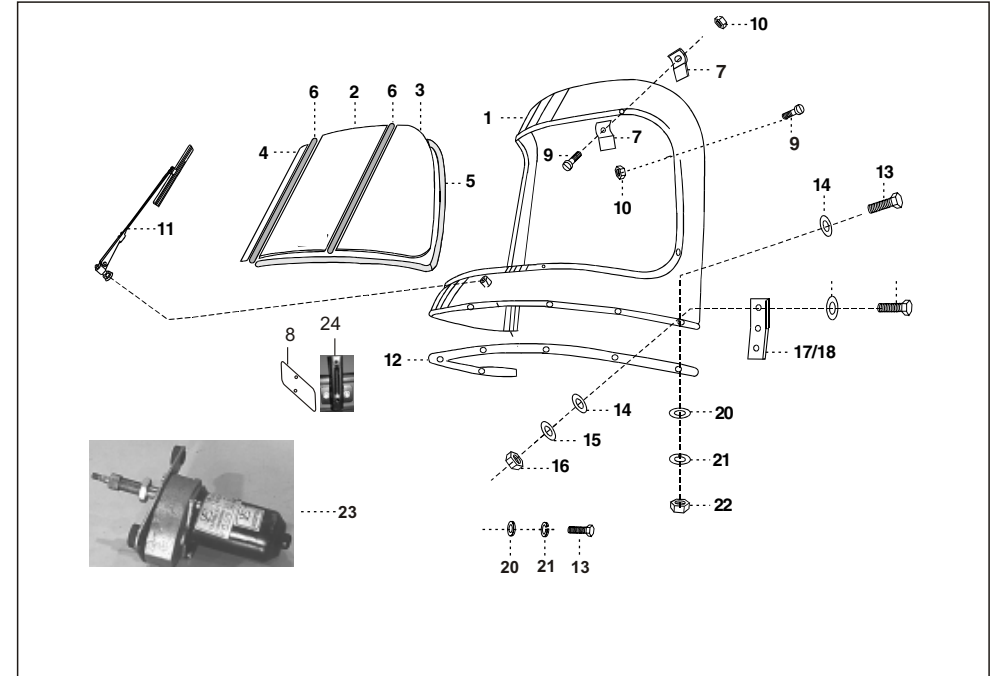
No.	Part No.	Description	Qty/Veh.	Remarks
1	24 2315 49	Body assembly complete	1	
2	BA 2310 58	Rear door assembly	1	
3	39 0096 04	Bolt	2	
4	39 0199 11	Plain washer	2	
5	39 0264 12	Spring washer	2	
6	39 0293 15	Hexagon nut	2	
7	01 1401 16	Tie rod	2	
8	39 0147 08	Split pin	2	
9	22 2301 40	Handle	2	
10	39 0044 01	Screw	4	
11	39 1830 12	Spring washer	4	
12	39 0291 15	Hexagon nut	4	
13	24 2315 06	Rubber pad	4	
14	24 2312 45	Knob for rear door	2	
15	24 2301 76	Knob complete	1	



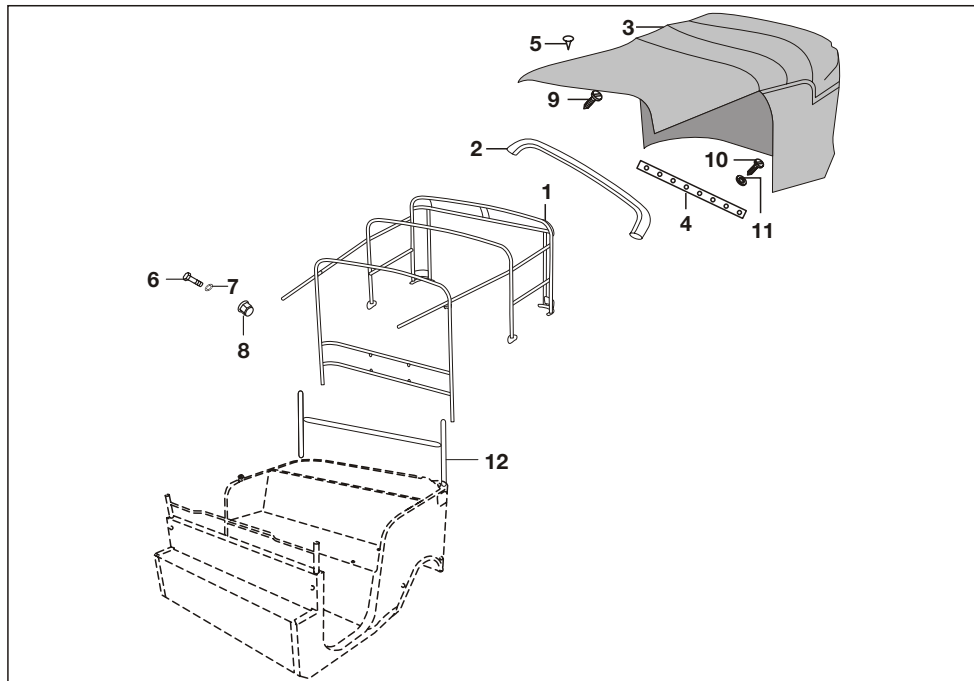
No.	Part No.	Description	Qty/Veh.	Remarks
16	01 1607 17	Lock clip	1	
17	24 2301 97	Lock for door	1	
18	24 2314 99	Side panel cover	2	
19	39 0365 13	Cup washer	12	
20	39 0364 02	Slotted pan he. tapping screw	12	
21	AF 2010 81	Engine Cabin light.	1	
22	AL 2010 88	Cabin light lens	1	
23	39 2208 04	Flange bolt	2	
24	39 1681 04	Flange bolt	8	
25	39 0230 11	Plain washer	8	
26	39 2479 15	Flange nut	8	
27	AP 2310 21	Plate assly air intake	1	
28	AA 1810 14	Lock Fuel filling door	1	
29	AA 2311 17	Door assly. side filling	1	
30	24 2314 73	Matting Rear	1	N.I.



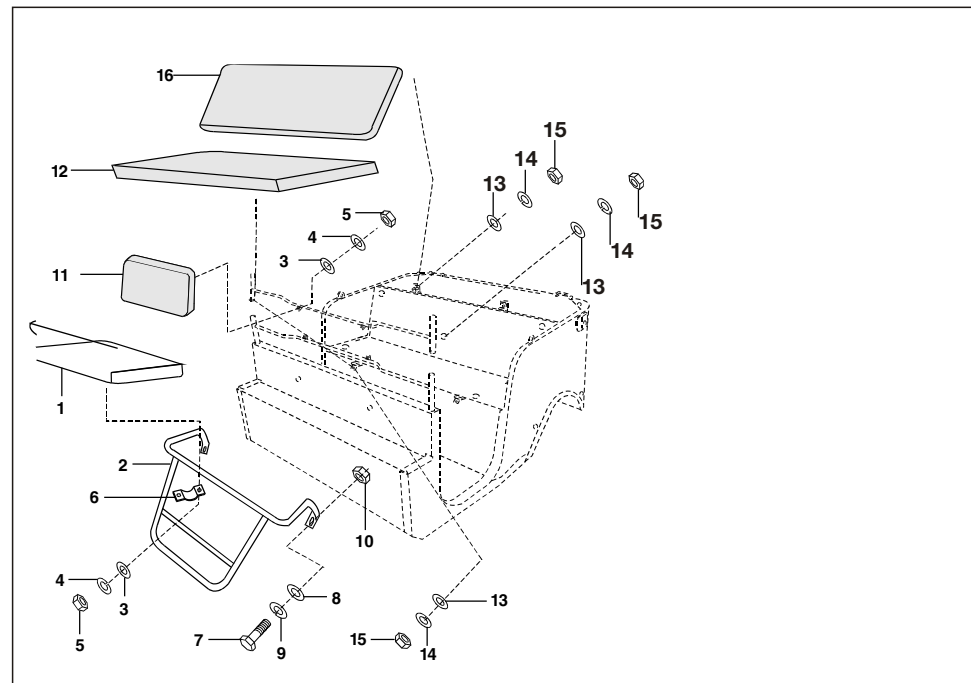
No.	Part No.	Description	Qty/Veh.	Remarks
1	22 2312 50	Windshield complete	1	
2	22 2312 58	Central glass	1	
3	22 2311 41	Side glass L.H.	1	Old
4	22 2311 40	Side glass R.H.	1	Old
5	22 2311 42	Rubber beading with key	1	New
6	24 2314 84	Vertical stripe/ key	2	
7	22 2312 80	Strip For w ' Shield Glass	8	N.I
8	22 1612 21	No. Plate	2	
9	39 0074 04	Screw - M4	8	
10	39 0287 15	Hexagon nut	8	
11	22 2306 35	Wiper assembly	1	
12	AL 2410 33	Rubber packing	1	
13	39 0085 04	Bolt	1	
14	39 0258 11	Plain washer	18	
15	39 1830 12	Spring washer	9	



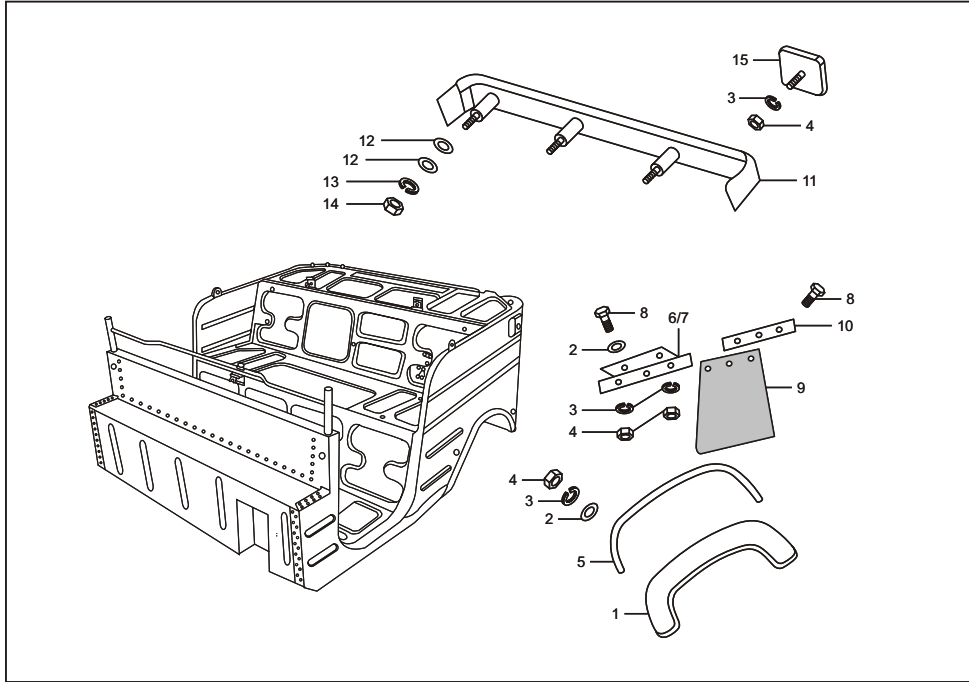
No.	Part No.	Description	Qty/Veh.	Remarks
16	39 0291 15	Hexagon nut	9	
17	AB 2310 09	Joint plate L.H.	1	
18	AB 2310 08	Joint plate R.H.	1	
19	39 0071 04	Hexagon bolt	6	
20	39 0197 11	Plain washer	14	
21	39 0262 12	Spring washer	8	
22	39 0291 15	Hexagon nut	6	
23	24 2014 08	Wiper Motor	1	
24	22 1612 38	Bracket fr. no. plate	1	



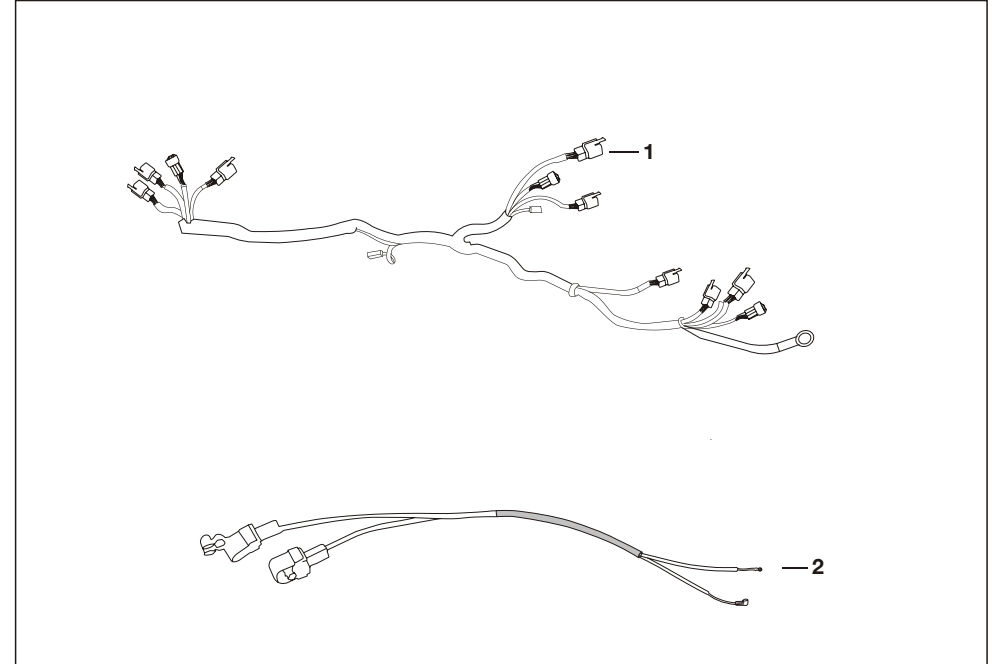
No.	Part No.	Description	Qty/Veh.	Remarks
1	24 2304 01	Hood Frame Assembly	1	
2	22 2311 55	Hood stick assly	1	
3	AA 2311 95	Hood Comp. White	1	
	24 2315 47	Hood Comp. Black	1	
	AF 2311 56	Hood Comp. Green	1	
4	24 2304 17	Strip al. hood fixing	1	
5	39 0371 18	Texas	15	
6	39 1159 02	Screw slotted head	8	
7	01 1106 09	Plain washer	8	
8	39 0294 15	Nut	8	
9	39 0372 16	Red Button	19	
10	39 0364 02	Screw	27	
11	39 0365 13	Washer cup	27	
12	24 2315 62	Tube assly cross bar	1	



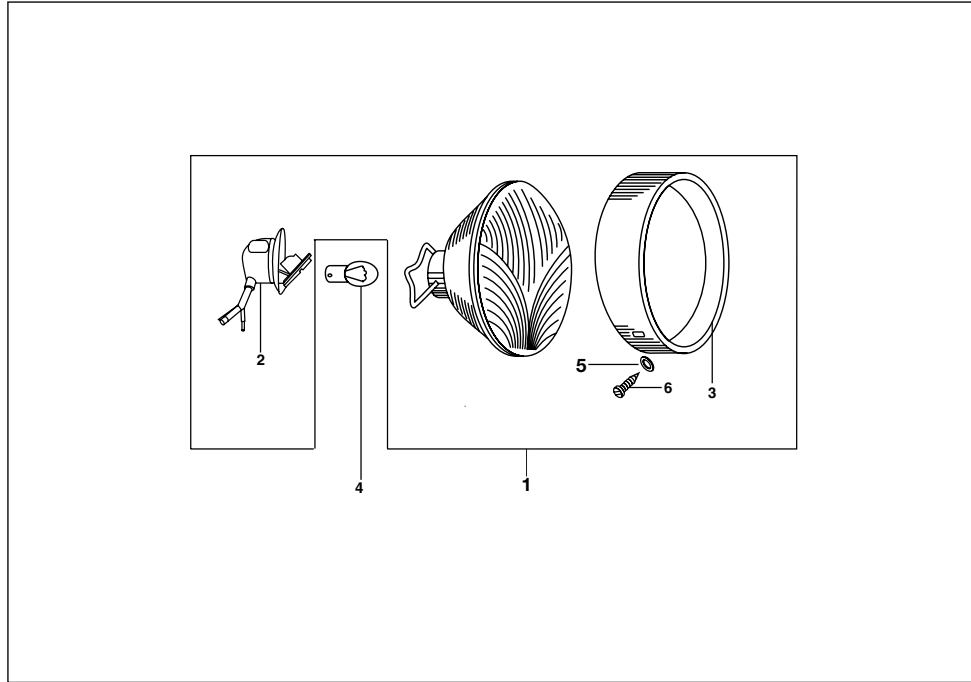
No.	Part No.	Description	Qty/Veh.	Remarks
1	AA 2311 40	Driver seat assly.	1	
2	AP 1610 54	Frame assembly driver seat	1	
3	39 0197 11	Plain washer	8	
4	39 0262 12	Spring washer	8	
5	39 0291 15	Hexagon nut	8	
6	24 2311 46	Clip	2	
7	39 0100 04	Bolt	2	
8	39 0230 11	Plain washer	2	
9	39 0265 12	Spring washer	2	
10	39 0294 15	Nut	2	
11	AF 2310 78	Driver backrest assembly	1	
12	AF 2310 79	Passenger Seat assly	1	
13	39 0211 11	Plain washer	5	
14	39 1830 12	Spring washer	5	
15	39 0292 15	Hexagon nut	5	
16	AA 2311 41	Passenger Backrest	1	



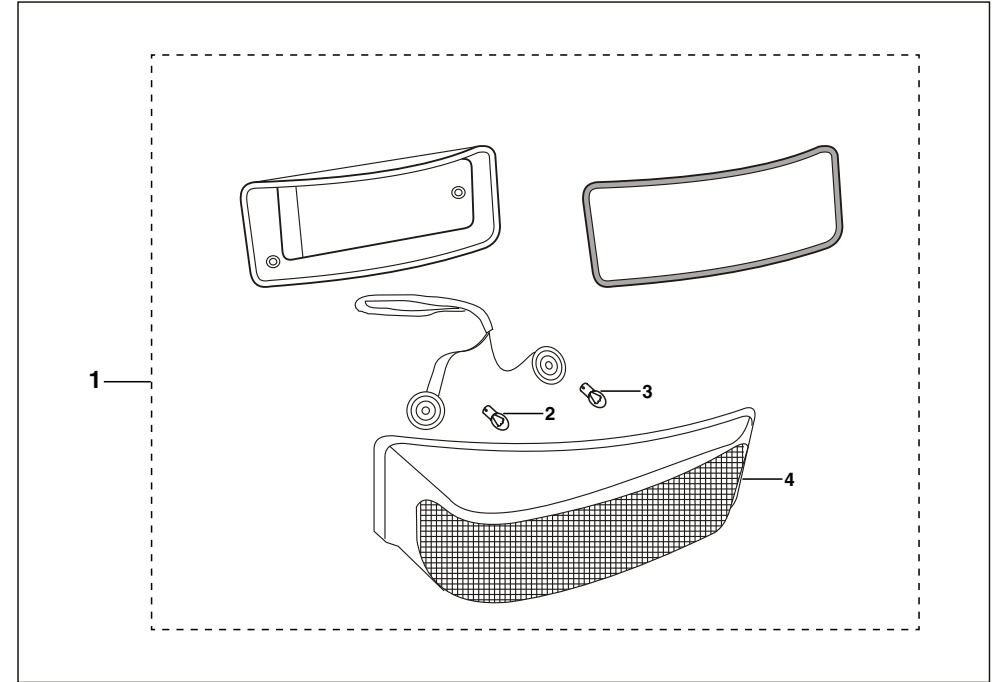
No.	Part No.	Description	Qty/Veh.	Remarks
1	25 2310 62	Rear mudguard assly.	2	
2	39 0197 11	Plain washer	12	
3	39 0262 12	Spring washer	20	
4	39 0291 15	Hexagonal nut	20	
5	25 2310 64	Beading for rear mudguard	2	
6	24 2310 90	Angle L.H	1	
7	24 2310 91	Angle R.H	1	
8	39 0071 04	Hexagonal bolt	10	
9	24 2301 85	Mudflap	2	
10	24 2311 57	Strip RE mudguard flap	2	
11	24 2301 86	Bumper assly	1	
12	39 0230 11	Plain washer	6	
13	39 1828 12	Spring washer	3	
14	39 0294 15	Nut	3	
15	30 2010 69	Reflex reflector	2	



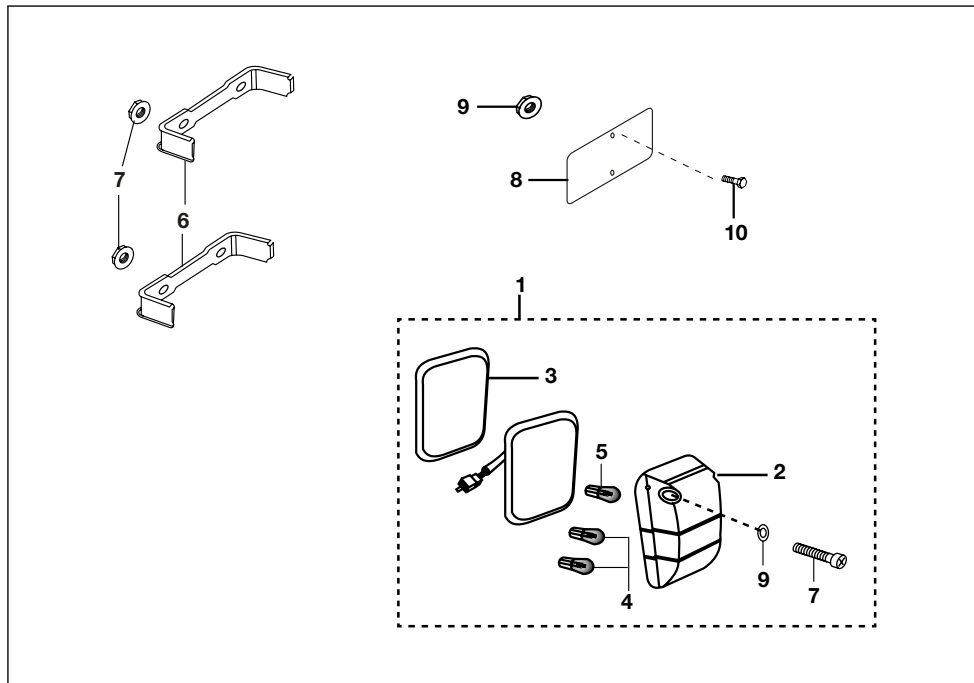
No.	Part No.	Description	Qty/Veh.	Remarks
1	24 2014 51	Combined Wiring Harness	1	
2	24 2014 50	Cable Assly. (Battery Cable)	1	Old
	24 2013 72	Cable Assly.	1	



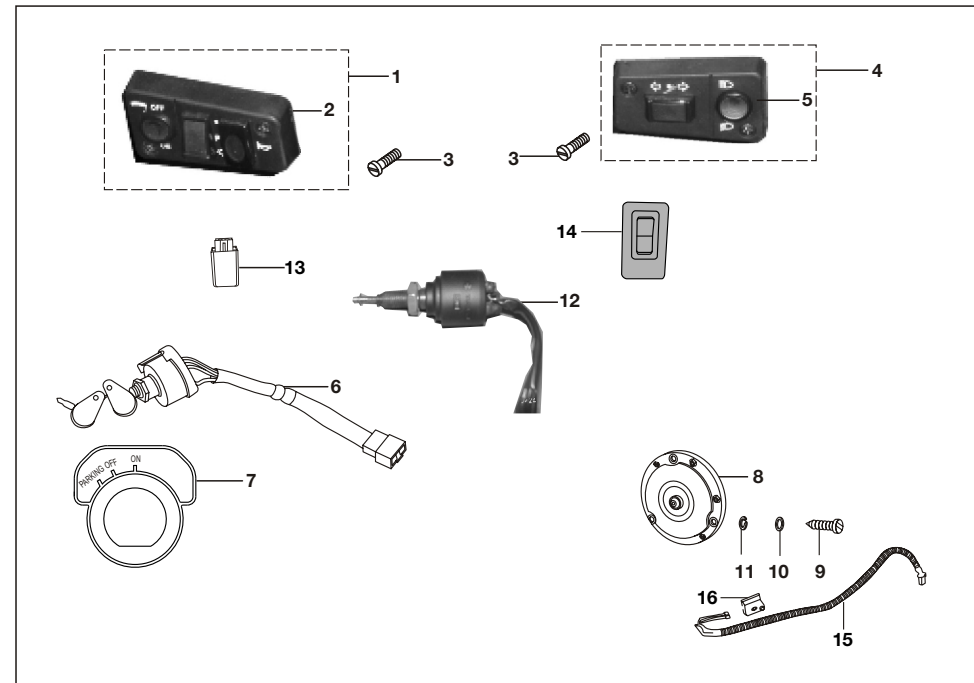
No.	Part No.	Description	Qty/Veh.	Remarks
1	AB 2010 73	Head light assly	1	
2	06 2013 96	Lamp holder assly	1	
3	AB 2010 68	Head lamp rim	1	
4	25 2010 09	Lamp 12V 35/35W	1	
5	01 2002 13	Cup Washer	2	
6	39 0006 01	Csk/ round head screw-M4	2	



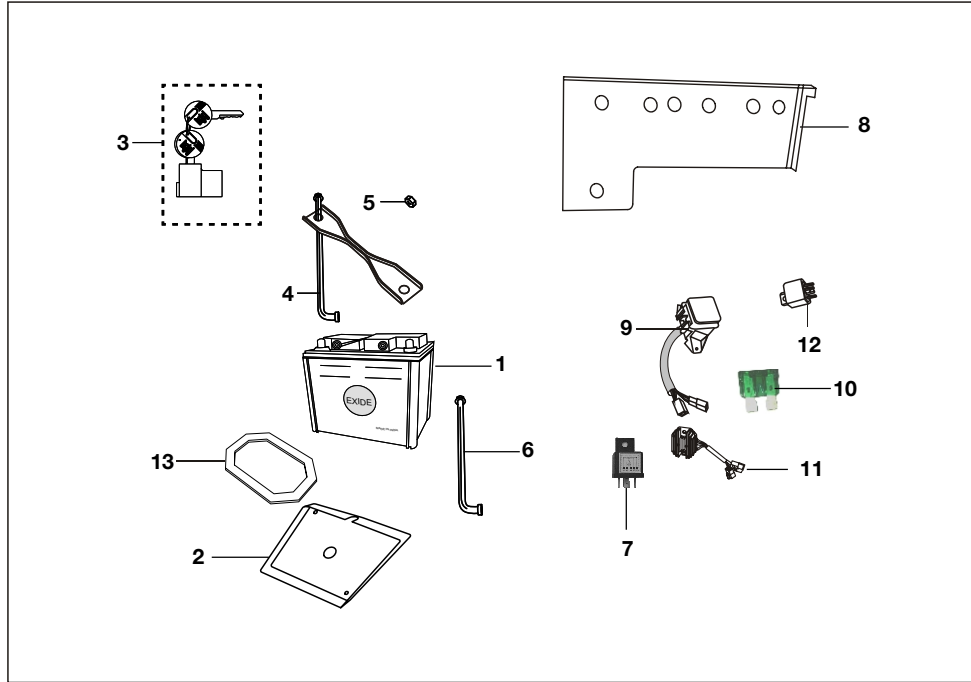
No.	Part No.	Description	Qty/Veh.	Remarks
1	AA 2010 91	Front light assly. LH	1	
	AA 2010 93	Front light assly. RH	1	
2	06 2010 83	Lamp 12v 10w	2	
3	06 2010 82	Lamp 12v 5w	2	
4	22 2005 21	Glass	2	



No.	Part No.	Description	Qty/Veh.	Remarks
1	AA 2012 25	Tail light LH with Lamp	1	
	AA 2012 26	Tail light RH with lamp	1	
2	AA 2011 61	Lens tail lamp LH	1	
	AA 2011 70	Lens tail lamp RH	1	
3	AC 2010 21	Packing for tail light LH & RH	2	
4	06 2010 83	Lamp 12v 10W	4	
5	AA 2012 27	Lamp 12V 18/5W	2	
6	AA 2010 90	Mounting bracket tail light RH	1	
7	39 0798 15	Flange Nut	8	
8	AF 1610 90	No. Plate	1	
9	39 0817 15	Flange nut	2	
10	39 1680 04	Flanged bolt	2	



No.	Part No.	Description	Qty/Veh.	Remarks
1	AL 2010 61	Control switch RH	1	
2	AL 2010 87	Switch cover RH	1	
3	AL 2010 62	Screw	4	
4	AL 2010 60	Control switch LH	1	
5	AL 2010 86	Switch cover LH	1	
6	24 2013 28	ON/OFF Parking switch	1	
7	AP 2010 12	Label parking OFF/ON switch	1	
8	AP 2010 06	Horn (DC)	1	
9	39 1557 04	Screw pan	2	
10	39 0197 11	Plain washer	2	
11	39 0262 12	Spring washer	2	
12	AF 2010 94	Brake switch	1	
13	AP 2010 21	Relay Flasher	1	
14	AB 2010 77	Hazard Switch	1	
15	24 2014 20	Cable Reverse switch	1	
16	DJ 2011 09	Reverse switch	1	



No.	Part No.	Description	Qty/Veh.	Remarks
1	24 2011 68	Battery 12V 9Ah (Dry)	1	
	24 2014 35	Battery 12V 9Ah (MF)	1	
2	BG 1138 05	Battery base tray	1	
3	BB 2010 30	Lock battery- with key	1	
	BB 2010 18	Lock battery	1	
4	24 1614 36	Clamp assly	1	
5	39 0817 15	Nut	2	
6	24 1614 36	Tie rod	1	
7	JB 4010 13	Head lamp control unit	1	
8	24 1615 03	Plate Assly Electrical Unit	1	
	AS 1600 02	Plate Assly Electrical Unit	--	
9	24 2014 07	Fuse box assembly	1	
10	AK 2010 12	Fuse blade type 10 Amp	6	
11	24 2012 77	Regulator with Capacitor	1	
12	AP 2010 21	D.C. Flasher	1	
13	22 2011 14	Packing Rubber for Battery	1	



No.	Part No.	Description	Qty/Veh.	Remarks
1	24 2210 27	Tool kit complete	1	
2	AA 2210 05	Mirror assly. LH	1	
3	AA 2210 06	Mirror assly. RH	1	
4	21 1704 16	Plain washer	4	
5	39 1829 12	Spring washer	2	
6	39 0296 15	Hex nut	4	

Part Index

RE 145

Part No.	Figure No.	Page No.	Part No.	Figure No.	Page No.
01100314	7	1	03170109	2	37
01100315	11	1	03170127	4	8
01100316	12	1	03180116	15	10
01100317	13	1	03190206	10	43
01100323	6	33	05101018	18	2
01100341	20	2	05101056	5	33
01100342	9	33	05190301	4	26
01100611	4	4	06100702	5	7
01100612	5	4	06101007	16	8
01100613	6	4	06101009	5	8
01100614	7	4	06101110	3	9
01100615	8	4	06101111	5	9
01100818	7	5	06101112	6	9
01100823	6	5	06101196	4	3
01100905	4	6	06101213	19	6
01100905	14	20	06111350	2	13
01100911	9	6	06160712	13	25
01101008	8	8	06160713	14	25
01101205	26	11	06180303	13	34
01101206	27	11	06191089	6	43
01101306	5	14	06201082	3	59
01110609	7	54	06201083	4	60
01140116	7	50	06201083	2	59
01160509	4	25	06201396	2	58
01160717	16	51	15101122	9	15
01170119	11	37	15141013	14	35
01190205	9	43	15181032	14	34
01200213	5	58	15181033	15	34
03100335	2	1	15181034	16	34
03100338	18A	2	16111125	7	13
03170109	5	21	16121138	3	16

Part Index

RE 145

Part No.	Figure No.	Page No.	Part No.	Figure No.	Page No.
19101014	9	7	22150435	13	47
19101016	10	7	22150515	7	32
19101017	10	7	22150520	13	32
19101018	10	7	22150522	18	32
19101019	10	7	22150524	2	32
19161151	13	27	22150525	16	32
20101020	10	9	22151063	14	32
21100324	12	7	22151064	15	32
21100711	11	7	22151106	13	30
21101427	17	11	22151106	1	36
21101429	14	10	22160805	2	25
21121086	16	16	22161193	3	25
21130110	1	19	22161195	2	27
21150306	3	31	22161202	12	25
21150307	2	31	22161208	11	47
21150420	3	32	22161221	8	52
21150422	2	47	22161238	24	53
21150422	10	47	22170115	6	37
21160417	12	24	22170117	7	37
21170416	4	63	22170118	12	37
21180207	5	42	22170434	11	30
21180307	14	42	22171007	8	33
21180308	16	42	22171080	17	19
22101003	2	15	22181025	1	42
22101115	2	10	22181044	17	34
22101211	6	3	22181058	2	42
22101423	19	11	22191096	5	26
22111080	8	13	22191097	6	26
22130147	3	5	22200161	4	27
22131014	11	19	22200521	4	59
22131018	10	19	22201114	13	62

Part Index

RE 145

Part No.	Figure No.	Page No.	Part No.	Figure No.	Page No.
22230140	9	50	24101203	24	11
22230635	11	52	24101205	4	14
22231140	4	52	24101206	1	4
22231141	3	52	24101409	16	11
22231142	5	52	24101414	3	10
22231250	1	52	24101417	12	10
22231258	2	52	24101419	20	11
22231280	7	52	24101421	22	11
23161305	23	11	24101422	10	10
23161305	9	21	24101552	17	1
23170704	10	3	24101572	7	10
24100305	15	1	24101597	10	6
24100305	3	20	24101598	11	6
24100308	22	2	24101615	13	10
24100311	25	2	24101616	21	11
24100314	24	2	24101627	7	8
24100704	7	7	24101628	3	8
24100705	8	7	24101629	1	3
24100808	1	6	24101630	2	3
24100907	7	6	24101632	9	3
24100908	14	6	24101633	1	1
24101005	6	8	24101635	9	14
24101049	6	7	24101636	2	8
24101069	12	20	24101674	2	6
24101087	18	11	24101676	3	6
24101096	5	6	24101687	29	2
24101100	1	7	24101697	33	2
24101111	2	9	24101700	34	2
24101155	6	14	24101706	20	6
24101177	1	10	24101712	3A	8
24101201	28	11	24101713	7A	8

Part Index

RE 145

Part No.	Figure No.	Page No.	Part No.	Figure No.	Page No.
24101714	2A	8	24130106	5	19
24101715	1	1	24130111	9	19
24101720	7A	10	24130113	13	19
24111105	3	12	24130114	14	19
24111107	1	14	24130118	21	19
24111109	5	13	24130129	11	20
24111121	1	13	24130209	7	21
24111124	7	12	24131001	6	21
24111154	1	12	24131008	4	21
24111155	2	12	24131009	16	19
24121069	2	16	24131016	7	19
24121224	12	17	24131032	12	19
24121361	5	16	24131071	6	29
24121365	10	16	24131074	10	29
24121374	12	16	24131075	20	19
24121381	19	16	24131078	1	20
24121435	12	6	24131079	10	20
24121457	1	16	24131088	13	20
24121472	15	17	24131092	15	20
24121474	13	17	24131096	5	29
24121449	11	16	24131101	8	20
24121485	18	16	24141113	9	22
24121486	4	16	24141131	15	22
24121487	7	16	24141132	16	23
24121488	9	16	24141133	17	23
24121508	14	16	24141134	20	23
24121645	3	17	24141135	21	23
24121652	8	22	24141136	18	23
24121657	1	18	24141137	19	23
24121661	1	17	24141138	3	22
24130105	3	19	24141139	4	22

Part Index

RE 145

Part No.	Figure No.	Page No.	Part No.	Figure No.	Page No.
24141140	5	22	24151131	6	39
24141141	7	22	24151133	8	39
24141148	30	23	24151134	9	39
24141148	13	22	24151135	10	39
24141150	6	22	24151136	3	39
24150406	12	47	24151137	11	39
24150506	11	32	24151138	12	39
24150507	12	32	24151139	13	39
24151059	7	49	24151144	5	39
24151060	7	49	24151145	9	32
24151061	1	32	24151146	10	32
24151067	14	40	24151147	4	32
24151068	15	40	24151148	19	32
24151069	16	40	24151151	5	39
24151079	18	46	24151152	7	39
24151087	2	45	24151154	8	32
24151090	4	45	24151155	1	45
24151093	8	45	24151163	1	41
24151094	3	45	24151164	1	48
24151095	13	46	24151168	22	40
24151097	9	45	24151169	17	40
24151098	10	45	24151170	18	40
24151107	2	41	24151171	19	40
24151107	2	48	24151172	20	40
24151110	1	31	24151173	21	40
24151114	3	41	24151174	2	39
24151114	3	48	24151175	22	40
24151119	1	39	24151176	17	40
24151120	1	39	24151178	2	39
24151129	5	39	24151179	22	40
24151130	4	39	24151180	17	40

Part Index

RE 145

Part No.	Figure No.	Page No.	Part No.	Figure No.	Page No.
24151181	18	40	24171118	10	30
24151182	21	40	24171120	1	33
24160913	5	24	24171121	2	33
24160924	11	24	24171129	17	38
24161003	14	24	24171136	1	37
24161297	2	22	24171137	3	36
24161319	29	11	24181016	12	34
24161352	30	11	24181033	6	34
24161363	6	25	24181034	2	34
24161390	9	27	24181043	1	34
24161427	1	27	24181051	12	42
24161436	4	62	24181059	8	27
24161436	6	62	24190224	7	27
24161454	7	24	24191080	5A	49
24161468	14	27	24191096	1	43
24161483	18	28	24191098	3	43
24161484	19	28	24191099	12	43
24161503	8	62	24191100	2	43
24161504	1	25	24191101	4	43
24170425	7	29	24191105	8	43
24170427	9	29	24191108	1	26
24170505	8	30	24191129	1	49
24170507	4	30	24191134	4	49
24171014	2	29	24191135	5	49
24171024	11	33	24191136	24	23
24171049	2	30	24191137	25	23
24171066	12	29	24191138	2	49
24171068	8	29	24191139	8	49
24171075	12	30	24191144	15	27
24171094	1	30	24191146	3	49
24171095	6	35	24201168	1	62

Part Index

RE 145

Part No.	Figure No.	Page No.	Part No.	Figure No.	Page No.
01100314	7	1	03170109	2	37
01100315	11	1	03170127	4	8
01100316	12	1	03180116	15	10
01100317	13	1	03190206	10	43
01100323	6	33	05101018	18	2
01100341	20	2	05101056	5	33
01100342	9	33	05190301	4	26
01100611	4	4	06100702	5	7
01100612	5	4	06101007	16	8
01100613	6	4	06101009	5	8
01100614	7	4	06101110	3	9
01100615	8	4	06101111	5	9
01100818	7	5	06101112	6	9
01100823	6	5	06101196	4	3
01100905	4	6	06101213	19	6
01100905	14	20	06111350	2	13
01100911	9	6	06160712	13	25
01101008	8	8	06160713	14	25
01101205	26	11	06180303	13	34
01101206	27	11	06191089	6	43
01101306	5	14	06201082	3	59
01110609	7	54	06201083	2	59
01140116	7	50	06201083	4	60
01160509	4	25	06201396	2	58
01160717	16	51	15101122	9	15
01170119	11	37	15141013	14	35
01190205	9	43	15181032	14	34
01200213	5	58	15181033	15	34
03100335	2	1	15181034	16	34
03100338	18A	2	16111125	7	13
03170109	5	21	16121138	3	16

Part Index

RE 145

Part No.	Figure No.	Page No.	Part No.	Figure No.	Page No.
19101014	9	7	22150435	13	47
19101016	10	7	22150515	7	32
19101017	10	7	22150520	13	32
19101018	10	7	22150522	18	32
19101019	10	7	22150524	2	32
19161151	13	27	22150525	16	32
20101020	10	9	22151063	14	32
21100324	12	7	22151064	15	32
21100711	11	7	22151106	13	30
21101427	17	11	22151106	1	36
21101429	14	10	22160805	2	25
21121086	16	16	22161193	3	25
21130110	1	19	22161195	2	27
21150306	3	31	22161208	11	47
21150307	2	31	22161221	8	52
21150420	3	32	22161238	24	53
21150422	2	47	22170115	6	37
21150422	10	47	22170117	7	37
21160417	12	24	22170118	12	37
21170416	4	63	22170434	11	30
21180207	5	42	22171007	8	33
21180307	14	42	22171080	17	19
21180308	16	42	22181025	1	42
22101003	2	15	22181044	17	34
22101115	2	10	22181058	2	42
22101211	6	3	22191096	5	26
22101423	19	11	22191097	6	26
22111080	8	13	22200161	4	27
22130147	3	5	22200521	4	59
22131014	11	19	22201114	13	62
22131018	10	19	22230140	9	50

Part No.	Figure No.	Page No.
22230635	11	52
22231140	4	52
22231141	3	52
22231142	5	52
22231155	2	54
22231250	1	52
22231258	2	52
22231280	7	52
23161305	23	11
23161305	9	21
23170704	10	3
24100305	15	1
24100305	3	20
24100308	22	2
24100311	25	2
24100314	24	2
24100704	7	7
24100705	8	7
24100808	1	6
24100907	7	6
24100908	14	6
24101005	6	8
24101049	6	7
24101069	12	20
24101087	18	11
24101096	5	6
24101100	1	7
24101111	2	9
24101155	6	14
24101177	1	10
24101201	28	11

Part No.	Figure No.	Page No.
24101203	24	11
24101205	4	14
24101206	1	4
24101409	16	11
24101414	3	10
24101417	12	10
24101419	20	11
24101421	22	11
24101422	10	10
24101552	17	1
24101572	7	10
24101597	10	6
24101598	11	6
24101615	13	10
24101616	21	11
24101627	7	8
24101628	3	8
24101629	1	3
24101630	2	3
24101632	9	3
24101633	1	1
24101635	9	14
24101636	2	8
24101674	2	6
24101676	3	6
24101687	29	2
24101697	33	2
24101700	34	2
24101706	20	6
24101712	3A	8
24101713	7A	8

Part No.	Figure No.	Page No.
24101714	2A	8
24101715	1	1
24101720	7A	10
24101723	8	3
24111105	3	12
24111107	1	14
24111109	5	13
24111121	1	13
24111124	7	12
24111155	2	12
24111190	8	13
24111195	1	12
24121069	2	16
24121224	12	17
24121361	5	16
24121365	10	16
24121374	12	16
24121381	19	16
24121435	12	6
24121449	11	16
24121457	1	16
24121472	15	17
24121474	13	17
24121485	18	16
24121486	4	16
24121487	7	16
24121488	9	16
24121508	14	16
24121645	3	17
24121652	8	22
24121657	1	18

Part No.	Figure No.	Page No.
24121661	1	17
24130105	3	19
24130106	5	19
24130111	9	19
24130113	13	19
24130114	14	19
24130118	21	19
24130129	11	20
24130209	7	21
24131001	6	21
24131008	4	21
24131009	16	19
24131016	7	19
24131032	12	19
24131071	6	29
24131074	10	29
24131075	20	19
24131078	1	20
24131079	10	20
24131088	13	20
24131092	15	20
24131096	5	29
24131101	8	20
24141113	9	22
24141131	15	22
24141132	16	23
24141133	17	23
24141134	20	23
24141135	21	23
24141136	18	23
24141137	19	23

Part No.	Figure No.	Page No.	Part No.	Figure No.	Page No.
24141138	3	22	24151129	5	39
24141139	4	22	24151130	4	39
24141140	5	22	24151131	6	39
24141141	7	22	24151133	8	39
24141148	13	22	24151134	9	39
24141148	30	23	24151135	10	39
24141150	6	22	24151136	3	39
24150406	12	47	24151137	11	39
24150506	11	32	24151138	12	39
24150507	12	32	24151139	13	39
24151059	7	49	24151144	5	39
24151060	7	49	24151145	9	32
24151061	1	32	24151146	10	32
24151067	14	40	24151147	4	32
24151068	15	40	24151148	19	32
24151069	16	40	24151151	5	39
24151079	18	46	24151152	7	39
24151087	2	45	24151154	8	32
24151090	4	45	24151155	1	45
24151093	8	45	24151163	1	41
24151094	3	45	24151164	1	48
24151095	13	46	24151168	22	40
24151097	9	45	24151169	17	40
24151098	10	45	24151170	18	40
24151107	2	41	24151171	19	40
24151107	2	48	24151172	20	40
24151110	1	31	24151173	21	40
24151114	3	41	24151174	2	39
24151114	3	48	24151175	22	40
24151119	1	39	24151176	17	40
24151120	1	39	24151178	2	39

Part No.	Figure No.	Page No.	Part No.	Figure No.	Page No.
24151179	22	40	24171094	1	30
24151180	17	40	24171095	6	35
24151181	18	40	24171118	10	30
24151182	21	40	24171120	1	33
24160913	5	24	24171121	2	33
24160924	11	24	24171129	17	38
24161003	14	24	24171136	1	37
24161297	2	22	24181016	12	34
24161319	29	11	24181033	6	34
24161352	30	11	24181034	2	34
24161363	6	25	24181043	1	34
24161390	9	27	24181051	12	42
24161427	1	27	24181059	12	25
24161436	4	62	24181059	8	27
24161436	6	62	24190224	7	27
24161454	7	24	24191080	5A	49
24161468	14	27	24191096	1	43
24161483	18	28	24191098	3	43
24161484	19	28	24191099	12	43
24161503	8	62	24191100	2	43
24161504	1	25	24191101	4	43
24170425	7	29	24191102	4	49
24170427	9	29	24191103	5	49
24170505	8	30	24191105	8	43
24170507	4	30	24191108	1	26
24171014	2	29	24191129	1	49
24171024	11	33	24191134	4	49
24171049	2	30	24191135	5	49
24171066	12	29	24191136	24	23
24171068	8	29	24191137	25	23
24171075	12	30	24191139	8	49

Part No.	Figure No.	Page No.	Part No.	Figure No.	Page No.
24191144	15	27	24231473	30	51
24191145	2	49	24231484	6	52
24191146	3	49	24231499	18	51
24201168	1	62	24231506	13	50
24201274	12	13	24231547	3	54
24201275	10	13	24231549	1	50
24201277	9	13	24231556	1	39
24201277	11	62	24231562	12	54
24201328	6	61	24231575	22	28
24201372	2	57	25201009	4	58
24201407	9	62	25231062	1	56
24201408	23	53	25231064	5	56
24201420	15	61	28101174	13	6
24201435	1	62	30201069	15	56
24201450	2	57	30201084	7	26
24201451	1	57	31121080	6	16
24221027	1	63	33141007	10	22
24230176	15	50	35101058	3	7
24230185	9	56	35101059	2	7
24230186	11	56	35101170	2	5
24230197	17	51	35101176	12	5
24230401	1	54	35101208	4	5
24230417	4	54	39000101	2	36
24231090	6	56	39000601	6	58
24231091	7	56	39000901	22	23
24231146	6	55	39001201	4	13
24231157	10	56	39004401	10	50
24231245	14	50	39006204	3	15
24231380	16	25	39006204	10	25
24231452	3	52	39007104	19	53
24231453	4	52	39007104	8	56

Part No.	Figure No.	Page No.	Part No.	Figure No.	Page No.
39007404	9	52	39020011	15	46
39008004	7	35	39020111	8	42
39008504	13	52	39020811	3	44
39008904	9	1	39021111	5	25
39008904	6	20	39021111	13	55
39009604	8	14	39021311	4	7
39009604	3	50	39023011	25	51
39010004	7	55	39023011	8	55
39010604	17	32	39023011	12	56
39011904	3	29	39023911	2	14
39013205	6	1	39024211	9	12
39014608	9	10	39024811	10	24
39014608	7	44	39025111	13	24
39014708	8	50	39025811	14	52
39015608	15	25	39026112	20	38
39016109	15	8	39026212	5	12
39019210	6	42	39026212	7	18
39019711	6	12	39026212	8	25
39019711	3	13	39026212	2	26
39019711	7	25	39026212	21	53
39019711	20	53	39026212	4	55
39019711	3	55	39026212	3	56
39019711	2	56	39026212	11	61
39019711	10	61	39026312	11	25
39019811	31	2	39026312	18	25
39019811	3	14	39026312	9	35
39019811	12	35	39026412	5	50
39019811	15	42	39026512	3	24
39019911	6	44	39026512	16	46
39019911	4	50	39026512	9	55
39020011	2	24	39026612	5	10

Part Index

RE 145

Part No.	Figure No.	Page No.	Part No.	Figure No.	Page No.
39026912	13	33	39034017	5	3
39028715	10	52	39034217	23	2
39028915	5	15	39034217	10	33
39029115	9	25	39034217	5	37
39029115	10	49	39036402	20	51
39029115	12	50	39036402	10	54
39029115	16	53	39036513	19	51
39029115	22	53	39036513	11	54
39029115	5	55	39037118	5	54
39029115	4	56	39037216	9	54
39029215	4	15	39038904	6	15
39029215	11	21	39039004	25	11
39029215	4	35	39042817	2	19
39029215	15	55	39043501	18	19
39029315	6	50	39043501	19	19
39029415	9	24	39044205	3	1
39029415	3	45	39044404	10	1
39029415	8	54	39044706	8	6
39029415	10	55	39045506	4	20
39029415	14	56	39046204	1	24
39029515	8	36	39046715	3	30
39029615	11	10	39046715	6	30
39029615	14	36	39054311	10	36
39029615	10	42	39054601	6	18
39029615	6	63	39055405	17	6
39030115	9	36	39063008	4	44
39030315	14	33	39069415	6	10
39031015	17	46	39069415	6	32
39031215	8	15	39069415	19	38
39032615	11	43	39076101	8	45
39033717	6	19	39078912	13	36

Part Index

RE 145

Part No.	Figure No.	Page No.	Part No.	Figure No.	Page No.
39079815	28	23	39155704	9	61
39079815	7	60	39157704	30	2
39080411	11	9	39158211	12	46
39081411	19	25	39158511	27	2
39081715	9	60	39158721	1	21
39081715	5	62	39166311	6	47
39084001	22	38	39167304	27	23
39084211	21	38	39168004	10	60
39085209	14	1	39168104	24	51
39088601	4	12	39170207	5	44
39089704	10	21	39173821	15	6
39092101	23	23	39175315	7	47
39095615	8	24	39177102	21	28
39099206	4	9	39177304	11	27
39100006	28	2	39182512	7	14
39100006	11	3	39182612	32	2
39104119	8	9	39182612	7	15
39105411	11	36	39182712	5	30
39115902	6	54	39182812	5	32
39118215	11	29	39182812	18	38
39121111	8	35	39182812	13	56
39122411	11	46	39182912	6	24
39135001	3	26	39182912	9	42
39135015	13	35	39182912	5	63
39135519	19	2	39183012	3	42
39135619	21	2	39183012	11	50
39137704	7	42	39183012	15	52
39137904	4	42	39183012	14	55
39138904	13	46	39190701	9	17
39142604	4	10	39194204	20	25
39155604	12	22	39194504	11	17

Part Index

RE 145

Part No.	Figure No.	Page No.	Part No.	Figure No.	Page No.
39199304	3	35	AA131025	2	21
39212415	16	6	AA131033	8	19
39220804	23	51	AA141046	17	16
39229515	13	42	AA141056	1	22
39235717	16	38	AA151036	1	47
39236220	4	37	AA161155	29	23
39236915	8	1	AA161166	17	28
39236915	12	9	AA171006	3	33
39236915	3	18	AA171007	4	33
39236915	9	20	AA171011	12	33
39237323	3	27	AA181014	28	51
39237423	6	27	AA191032	7	43
39243604	18	6	AA201090	6	60
39244417	9	37	AA201091	1	59
39245111	19	42	AA201093	1	59
39247915	26	51	AA201161	2	60
39248415	12	27	AA201170	2	60
39250823	5	27	AA201225	1	60
39254004	8	20	AA201226	1	60
39254104	7	20	AA201227	5	60
39255020	3	37	AA221005	2	63
39267104	26	2	AA221006	3	63
39271115	26	23	AA231117	29	51
59040029	12	21	AA231140	1	55
59050009	4	1	AA231141	16	55
59150012	4	24	AA231195	3	54
59200012	7	33	AA251001	14	21
AA101329	8	10	AA251003	15	21
AA101345	3	4	AB151007	4	45
AA111076	6	13	AB151014	2	44
AA131004	13	21	AB151048	3	47

Part Index

RE 145

Part No.	Figure No.	Page No.	Part No.	Figure No.	Page No.
AB151049	4	47	AB181011	3	34
AB151051	5	47	AB181012	4	34
AB151052	8	47	AB181016	7	34
AB151054	5	45	AB181017	8	34
AB151063	1	45	AB181019	9	34
AB151069	2	45	AB181020	10	34
AB151071	7	45	AB181021	11	34
AB151072	6	45	AB181022	11	42
AB151073	9	45	AB181033	5	34
AB151074	10	45	AB201065	10	35
AB151104	5	45	AB201068	3	58
AB151105	6	45	AB201073	1	58
AB151126	1	44	AB201077	14	61
AB161040	17	25	AB231008	18	53
AB161159	5	35	AB231009	17	53
AB161182	2	35	AC201021	3	60
AB161183	11	35	AE101006	8	5
AB161188	1	35	AE101007	1	15
AB171013	9	30	AE101014	1	5
AB171013	5	36	AE101015	10	5
AB171014	6	36	AE101066	9	5
AB171015	7	36	AE101068	11	5
AB171016	4	36	AE101070	6	6
AB171020	15	37	AE101071	5	5
AB171022	13	37	AE121001	5	18
AB171023	14	37	AE121045	2	18
AB171031	12	36	AE121047	4	18
AB171032	8	37	AE131003	3	21
AB171033	8A	37	AE131003	8	21
AB171034	10	37	AE131011	15	19
AB171044	3	36	AE131013	5	20

Part No.	Figure No.	Page No.	Part No.	Figure No.	Page No.
AF121328	20	16	AP101245	2	4
AF161090	8	60	AP101249	1	9
AF201081	21	51	AP111023	9	9
AF201094	12	61	AP121009	2	17
AF231078	11	55	AP121027	4	17
AF231079	12	55	AP121027	16	17
AF231156	3	54	AP121057	10	17
AK201012	10	62	AP121064	14	17
AL151168	10	27	AP121124	8	17
AL191026	11	49	AP121125	6	17
AL191039	9	49	AP121126	7	17
AL201060	4	61	AP121132	5	17
AL201061	1	61	AP151017	2	39
AL201062	3	61	AP151028	1	39
AL201086	5	61	AP161035	16	28
AL201087	2	61	AP161054	2	55
AL201088	22	51	AP181009	17	42
AL241033	12	52	AP201006	8	61
AP101005	7	3	AP201012	7	61
AP101091	14	9	AP201021	13	61
AP101146	5	1	AP201021	12	62
AP101157	9	8	AP231021	27	51
AP101158	12	8	AS160002	8	62
AP101159	11	8	BA122003	14	22
AP101160	14	8	BA122005	11	22
AP101162	13	8	BA132122	2	20
AP101164	17	8	BA132134	4	19
AP101198	13	9	BA132171	1	29
AP101207	10	8	BA132172	4	29
AP101243	2	4	BA161134	14	46
AP101244	2	4	BA171005	7	30

Part No.	Figure No.	Page No.	Part No.	Figure No.	Page No.
BA191029	8	44			
BA231058	2	50			
BB131024	13	29			
BB131040	14	29			
BB131150	15	29			
BB201018	3	62			
BB201030	3	62			
BG113804	14	47			
BG113805	2	62			
BG131802	6	49			
CB121046	13	16			
CB161105	20	28			
CD101024	3	3			
CD101080	7	9			
CD101102	16	1			
CD111004	8	12			
CM191049	5	43			
DD121047	8	16			
DD141227	11	13			
DD161013	9	47			
DJ201109	16	61			
DZ121047	15	16			
JB401013	7	62			
KUBC0410	18	42			
LAC00025	10	12			
LCA00003	1	8			
LHC00001	13	43			